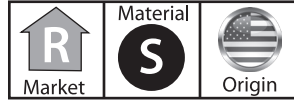


Series B22

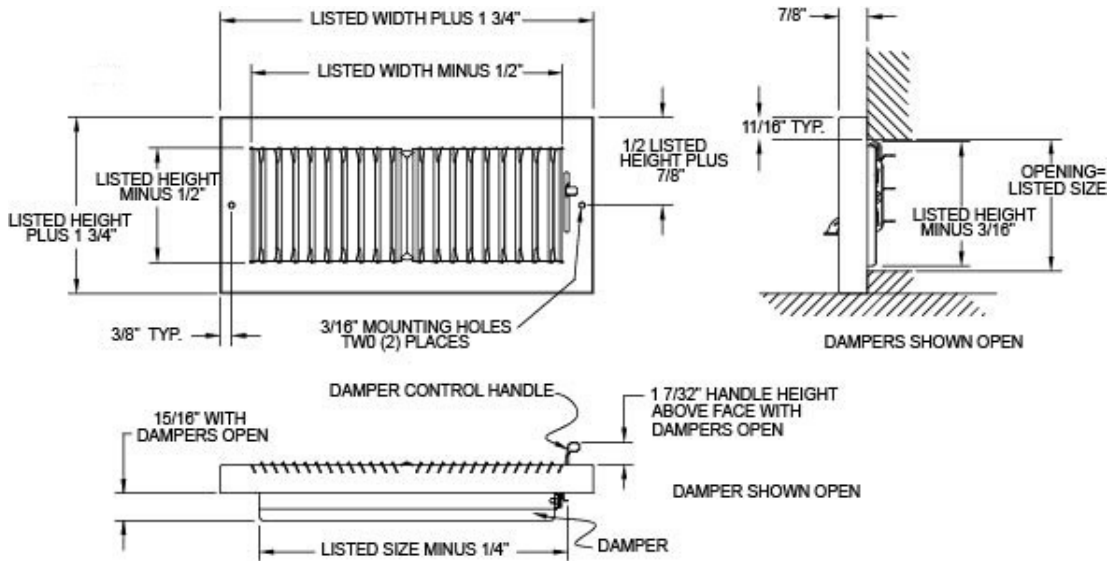
Baseboard Diffuser



- ◇ Lanced face
- ◇ Multi-shutter damper
- ◇ 1/2" spaced fins
- ◇ 7/8" base extension
- ◇ 10", 12" widths, 6" height
- ◇ White finish
- ◇ Made in the U.S.A.



Dimensional Drawings



Performance Data, Series B22

Unit Size (in.)	Overall Size (in.)	Face Velocity	300	400	500	600	700	800	900	1000
		Pressure Loss	.006	.010	.016	.022	.031	.040	.050	.062
10 x 6 Ak .29	11 3/4 x 7 3/4	Cfm	87	116	145	174	203	232	261	290
		Throw	6	8	9	11	13	15	17	19
12 x 6 Ak .35	13 3/4 x 7 3/4	Cfm	105	140	175	210	245	280	315	350
		Throw	7	8	10	12	15	17	19	21

Terminal velocity is 75 fpm. Always specify width by height.