



Product Catalog



... because everyone needs to vent™



CONTENTS

Our Story iv

All Fuel Chimney Systems 1

 6" Diameter 2

 8" Diameter 11

 10" Diameter 20

 All Fuel Dimensions 27

FlexJet Chimney Liners..... 31

Flexible B-vent Connectors..... 39

Gas Venting Systems 43

 3" - 7" Diameter..... 44

 8" Diameter 54

 10" Diameter 58

 12" Diameter 62

 14" - 22" Diameter..... 65

 24" - 36" Diameter..... 70

 B-vent Dimensions..... 76

Using the AirJet Snap-Lock System vii

Warranty & Limitations..... ix

Our Story

In 1955, Continental owner and founder, David Leiter, established a metal-working shop known as Metaline Products. Reading the market forces at work, he took advantage of the housing boom of the 1950s by developing a line of register products geared toward manufactured housing. This endeavor then led to opportunities in the conventional residential housing market. So, the products evolved with the changing HVAC technology, adding diffusers and grilles, under the brand name of Continental Register.



In 1979, Metaline made a strategic acquisition of A&A Register of Cleveland, Ohio. Operations of A&A Register were relocated to Elkhart, Indiana to consolidate resources. Aware of the broadening impact of this acquisition, in that same year (1979) Mr. Leiter changed the name of the corporation to Continental Industries. At this time, Metaline Products became the brand name for the manufactured housing market while "Continental Register" was established as a moniker for the growing line of GRDs intended for the broader market and made available through HVAC wholesalers.



In 1996, Continental purchased Auer Register, also based in Cleveland. The Auer Register Company began in 1892 when George Auer, a heating contractor and home furnace installer, started making grilles and registers for the housing industry. Auer Register assets were relocated to Elkhart, Indiana in this same year (1996).



In 2004, Continental expanded its product line to include combustion venting products with its acquisition of AirJet Venting Systems of Fredericksburg, VA. This company had been founded in 1945 as General Products Corporation. In 2010, AirJet operations were relocated to Elkhart, Indiana.



Today, Continental Industries remains a privately held manufacturer under the ownership of David Leiter. Through the years, the company has survived devastating fire and tremendous market changes. Nevertheless, its distribution network has grown throughout North America. GRD products still reach the world through HVAC & plumbing wholesalers as do AirJet B-vent products. The complete AirJet line is made available through hearth and chimney-specific distributors.



As always, product quality remains at the forefront of Continental operations. In addition, the company has optimized operations to bring you the very best product at the best possible prices. From design engineering to sourcing and production, Continental efficiencies rival best-in-class practices—and, all with an American workforce.



Corporate headquarters & GRD production
Elkhart, Indiana • $\approx 200,000$ sq. ft.



Production for AirJet Venting/Chimney
Elkhart, Indiana • $\approx 100,000$ sq. ft.



All Fuel Chimney Systems

for use with gas, liquid, or solid-fuel fired appliances
Listed UL 103



6" Diameter

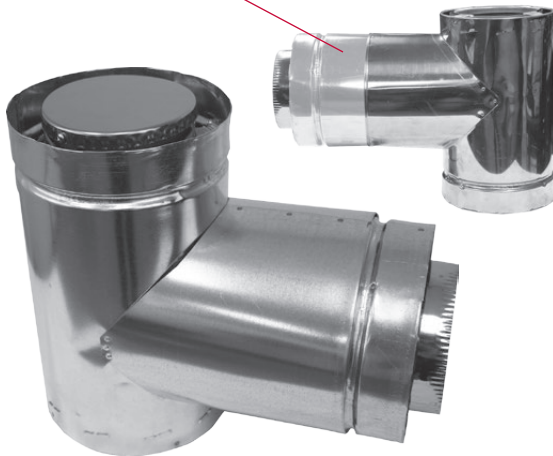


Pipe

- UL Listed 103 HT (2100°)
- Air-insulated, triple-wall design
- Stainless steel inner; aluminized steel intermediate; galvanized or stainless steel outer
- Lightweight design for easy handling
- Snap-Lock design for easy assembly

Part #	Description
6S1	Round Pipe, 1'
6S2	Round Pipe, 2'
6S3	Round Pipe, 3'
6S4	Round Pipe, 4'
6S1-S	Round Pipe, Stainless Steel, 1'
6S2-S	Round Pipe, Stainless Steel, 2'
6S3-S	Round Pipe, Stainless Steel, 3'
6S4-S	Round Pipe, Stainless Steel, 4'

Adjustable snout (branch)



Adjustable Snout Tee

- Designed for through-the-wall (exterior) installations
- UL Listed 103 HT (2100°)
- Branch adjusts to accommodate wall thicknesses of 4.5" to 8.5" (+ necessary outside clearance)
- Air-insulated, triple-wall design
- Stainless steel inner; aluminized steel intermediate; galvanized or stainless steel outer
- Snap-Lock design

Part #	Description
6ST	Insulated Tee w/ Cap - Adjustable Branch
6ST-S	Tee- Stainless Jacket- Adjustable Branch



Wall (Tee) Support

- Supports Tee on exterior wall
- Galvanized steel construction

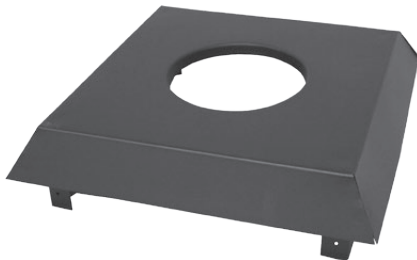
Part #	Description
6STS	Wall (Tee) Support



Offsets

- UL Listed 103 HT (2100°)
- Air-insulated, triple-wall design
- Stainless steel inner; aluminized steel intermediate; galvanized or stainless steel outer
- Lightweight design for easy handling
- Snap-Lock design for easy assembly

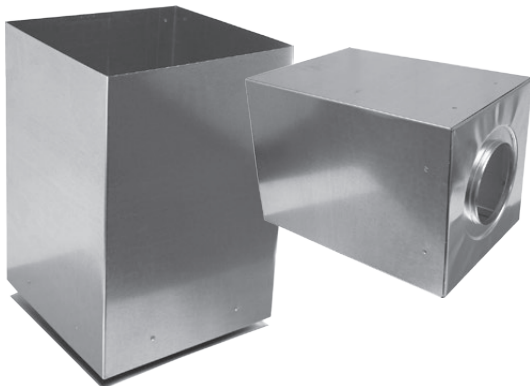
Part #	Description
6S15	15° Offset
6S15-S	15° Offset - Stainless Steel
6S30	30° Offset
6S30-S	30° Offset - Stainless Steel



Ceiling Cover/Base Support

- UL Listed 103 HT (2100°)
- Can support the Starter Section and Attic Insulation Shield in through-the-ceiling installations
- Provides a finished look from inside the heated space
- Steel construction; painted, matte black finish

Part #	Description
6SCCB	Ceiling Cover Base Support, Matte Black



Roof Support

- Supports the Starter Section in "A" frame or cathedral ceiling installations
- Galvanized steel construction
- Trim to roof/ceiling slope

Part #	Description
6SRS	Roof Support



Wall Band

- For use on exterior wall installations
- Galvanized steel construction

Part #	Description
6SWB	Wall Band

6" Diameter



Adjustable Pass-Thru Support

- Supports chimney as it passes through roof line.
- Also used for cathedral ceilings and free-standing stove/fireplace installations
- Adjustable to various roof/ceiling pitches

Part #	Description
6APTS	Adjustable Pass-Thru Support

Termination Cap



- UL Listed 103 HT (2100°)
- Stainless and galvanized steel construction
- Optional spark arrestor screen

Part #	Description
6SU	JetCap
6SUS	JetCap with Spark Arrestor

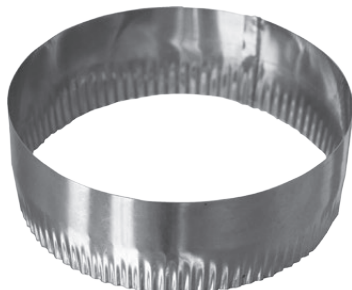
Storm Collar



- UL Listed 103 HT (2100°)
- Used to keep the boot flashing leak free
- Galvanized steel construction (standard) or optional Aluminum construction

Part #	Description
6SSC	Storm Collar
6SSC-S	Storm Collar, Aluminum

Stove Pipe Adapter



- Provides drip-free hookup of triple wall pipe to single wall on oil installations, where starter section is not required.
- Stainless steel construction

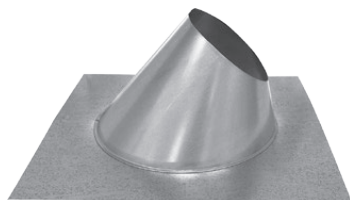
Part #	Description
6SPA	Stove Pipe Adapter

Flashing

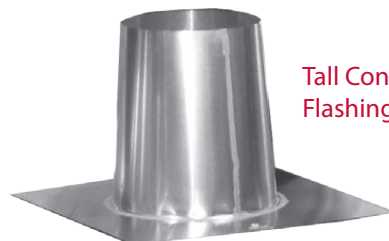


Standard Flashing

- UL Listed 103 HT (2100°)
- Galvanized steel or optional aluminum construction



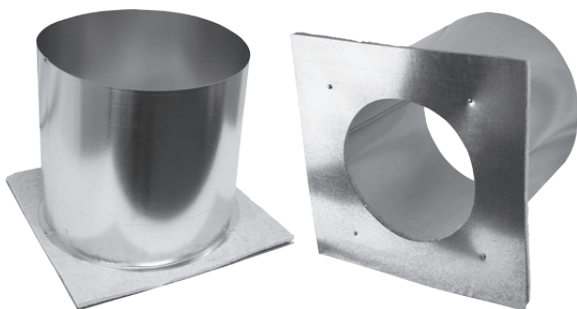
Steep Pitch Flashing



Tall Cone Flashing

Part #	Description
6SBF	Standard Flashing, Adjustable 0/12 -6/12
6SBFT	Tall Cone Flashing (Flat Roof)
6SBFX	Steep Pitch Flashing (7/12-12/12)
6SBFY	Steep Pitch Flashing (13/12-18/12)
6SBFZ	Steep Pitch Flashing (19/12-24/12)
6SBF-S	Standard Flashing, Adjustable (0/12-6/12), Aluminum
6SBFT-S	Tall Cone Flashing, Aluminum
6SBFX-S	Steep Pitch Flashing (7/12-12/12), Aluminum

Firestop & Joist Shield



- Used between floors of living spaces to ensure ample space around chimney for proper fire protection
- Galvanized steel base, fire retardant insulation layer and aluminum cylinder
- May be used from upper floor facing down or lower floor facing up

Part #	Description
6SJS	Firestop & Joist Shield

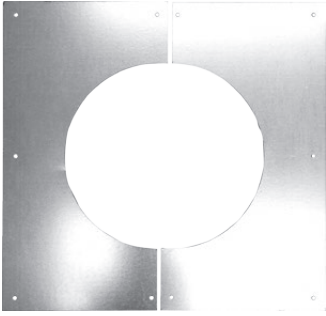


Wall Thimble

- Used in through-the-wall installations to ensure ample space around chimney for proper fire protection
- Galvanized steel construction with fire retardant insulation layer
- Painted, matte black finish on face

Part #	Description
6SWT	Wall Thimble

6" Diameter



Weather Shield

- Used in through-the-wall installations to provide weather protection for exterior wall
- Similar to roof flashing in purpose
- Galvanized steel construction

Part #	Description
6SWSH	Weather Shield (pair)



Face Plate

- Attaches to Tee for through-the-wall installations
- Galvanized steel construction
- Painted matte black finish

Part #	Description
6SFP	Face Plate (Matte Black)



Starter Section

- UL Listed 103 HT (2100°)
- The ideal transition from appliance-supplied pipe to the AirJet system for through-the-roof applications
- Acts as safety valve at extremely high temperatures by inhaling cool air from outside the chimney pipe to maintain safe, even temperature inside
- Air-insulated, triple-wall design
- Stainless steel inner; aluminized steel intermediate; galvanized or stainless steel outer
- Snap-Lock design for easy assembly

Part #	Description
6SS	Starter Section (required for 2100°)



Attic Insulation Shield

- UL Listed 103 HT (2100°)
- Typically houses the Starter Section and provides an added layer of protection between the chimney system and attic insulation
- Galvanized steel construction
- Includes Storm Collar

Part #	Description
6SIS	Attic Insulation Shield

Masonry Anchor Plate w/ 1' Pipe



- UL Listed 103 HT (2100°)
- For use with zero-clearance and masonry fireplaces
- Mounts directly to fireplace outlet
- 1-foot section of AirJet All Fuel pipe mounted to heavy gauge steel plate

Part #	Description
6SAP	Masonry Anchor Plate w/ 1' Pipe

2100° High Temperature Kit



- UL Listed 103 HT (2100°)
- Conveniently packages the Starter Section and Attic Insulation Shield

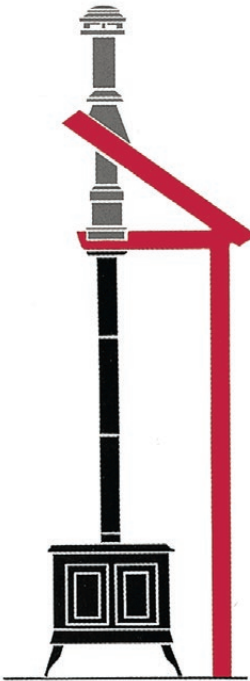
Part #	Description
6SHTK	6" 2100° High Temp Kit

6" Diameter

Chase Kit

- Includes
- Termination Cap
 - Standard Flashing
 - Storm Collar
 - Ceiling Cover/Base Support
 - Instructions

- Notes:
- Also suitable for manufactured/modular homes
 - In most cases, this application requires use of the 6SHTK (High Temperature Kit)

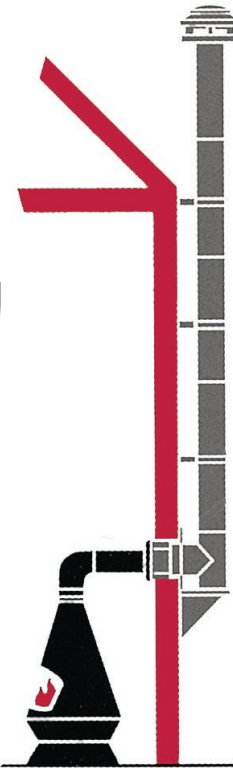


Part #	Description
6SCKS	6" Chase Kit with standard JetCap
6SCKSS	6" Chase Kit, with Spark Arrestor JetCap

Outside Wall Kit

- Includes
- Termination Cap
 - Wall Bands (3)
 - Tee
 - Tee Support
 - Weather Shield
 - Wall Thimble
 - Face Plate
 - Hardware
 - Instructions

- Notes:
- Also suitable for manufactured/modular homes



Part #	Description
6SOTK	6" Outside Wall Kit, with Galvanized Tee
6SOTK-S	6" Outside Wall Kit, with Stainless Tee

Roof Support Kit

- Includes
- Termination Cap
 - Choice of Flashing
 - Storm Collar
 - Roof Support
 - Starter Section
 - Instructions



Part #	Description
6SRSK	6" Roof Support Kit w/ Standard JetCap and Standard Flashing
6SRSK/X	6" Roof Support Kit w/ Standard JetCap and 7/12–12/12 Flashing
6SRSK/Y	6" Roof Support Kit w/ Standard JetCap and 13/12–18/12 Flashing
6SRSKS	6" Roof Support Kit w/ Standard Flashing and JetCap with Spark Arrestor

6" Diameter

Housing Kits

Includes

- Stainless Steel Cap
- Painted Wall Panels (4)
- Two-piece Flashing
- 18" Stainless Steel Telescoping Connector
- Ceiling Cover/Base Support
- Hardware
- Instructions



Part #	Description
6H36R	17 x 17 x 36 Housing Kit, Plain Red
6H36W	17 x 17 x 36 Housing Kit, Plain White
6HL36R	17 x 17 x 36 Housing Kit, Red Brick
6HL36T	17 x 17 x 36 Housing Kit, Tan Brick
6HL36W	17 x 17 x 36 Housing Kit, White Brick
6H48R	17 x 17 x 48 Housing Kit, Plain Red
6H48W	17 x 17 x 48 Housing Kit, Plain White
6HL48R	17 x 17 x 48 Housing Kit, Red Brick
6HL48W	17 x 17 x 48 Housing Kit, White Brick
6HL60R	17 x 17 x 60 Housing Kit, Red Brick
6HL60W	17 x 17 x 60 Housing Kit, White Brick



Pipe

- UL Listed 103 HT (2100°)
- Air-insulated, triple-wall design
- Stainless steel inner; aluminized steel intermediate; galvanized or stainless steel outer
- Lightweight design for easy handling
- Snap-Lock design for easy assembly

Part #	Description
8S1	Round Pipe, 1'
8S2	Round Pipe, 2'
8S3	Round Pipe, 3'
8S4	Round Pipe, 4'
8S1-S	Round Pipe, Stainless Steel, 1'
8S2-S	Round Pipe, Stainless Steel, 2'
8S3-S	Round Pipe, Stainless Steel, 3'

Adjustable snout (branch)



Adjustable Snout Tee

- Designed for through-the-wall (exterior) installations
- UL Listed 103 HT (2100°)
- Branch adjusts to accommodate wall thicknesses of 4.5" to 8.5" (+ necessary outside clearance)
- Air-insulated, triple-wall design
- Stainless steel inner; aluminized steel intermediate; galvanized or stainless steel outer
- Snap-Lock design

Part #	Description
8ST	Insulated Tee with Cap - Adjustable Branch
8ST-S	Tee - Stainless Jacket - Adjustable Branch



Wall (Tee) Support

- Supports Tee on exterior wall
- Galvanized steel construction

Part #	Description
8STS	Wall (Tee) Support

8" Diameter

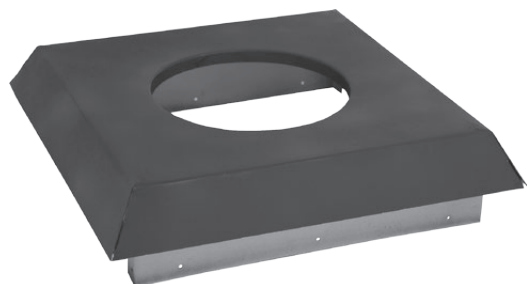


Offsets

- UL Listed 103 HT (2100°)
- Air-insulated, triple-wall design
- Stainless steel inner; aluminized steel intermediate; galvanized or stainless steel outer
- Lightweight design for easy handling
- Snap-Lock design for easy assembly

Part #	Description
8S15	15° Offset
8S15-S	15° Offset - Stainless Jacket
8S30	30° Offset
8S30-S	30° Offset - Stainless Jacket

Ceiling Cover/Base Support



- UL Listed 103 HT (2100°)
- Can support the Starter Section and Attic Insulation Shield in through-the-ceiling installations
- Provides a finished look from inside the heated space
- Steel construction; painted, matte black finish

Part #	Description
8SCCB	Ceiling Cover/Base Support, Matte Black



Roof Support

- Supports the Starter Section in "A" frame or cathedral ceiling installations
- Galvanized steel construction
- Trim to roof/ceiling slope

Part #	Description
8SRS	Roof Support (Cathedral)



Wall Band

- For use on exterior wall installations
- Galvanized steel construction

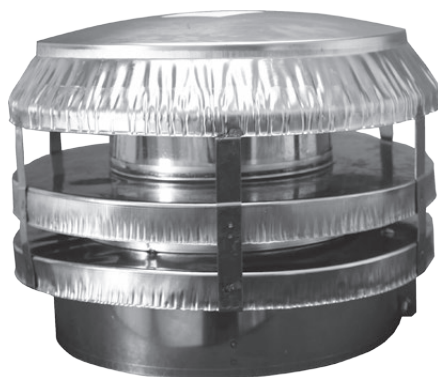
Part #	Description
8SWB	Wall Band



Adjustable Pass-Thru Support

- Supports chimney as it passes through roof line.
- Also used for cathedral ceilings and free-standing stove/fireplace installations
- Adjustable to various roof/ceiling pitches

Part #	Description
8APTS	Adjustable Pass-Thru Support



Termination Cap

- UL Listed 103 HT (2100°)
- Stainless and galvanized steel construction
- Optional spark arrestor screen

Part #	Description
8SU	JetCap
8SUS	JetCap with Spark Arrestor



Storm Collar

- UL Listed 103 HT (2100°)
- Used to keep the boot flashing leak free
- Galvanized steel construction (standard) or optional Aluminum construction

Part #	Description
8SSC	Storm Collar
8SSC-S	Storm Collar - Aluminum



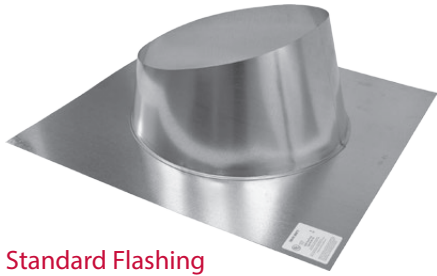
Stove Pipe Adapter

- Provides drip-free hookup of triple wall pipe to single wall on oil installations, where starter section is not required.
- Stainless steel construction

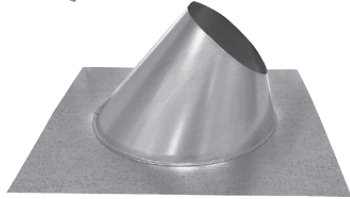
Part #	Description
8SPA	Stove Pipe Adapter

8" Diameter

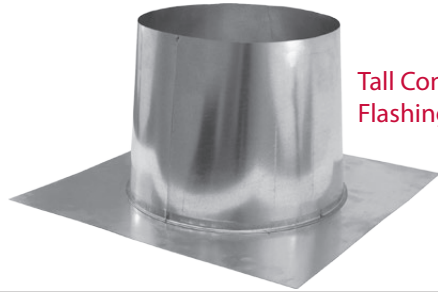
Flashing



Standard Flashing



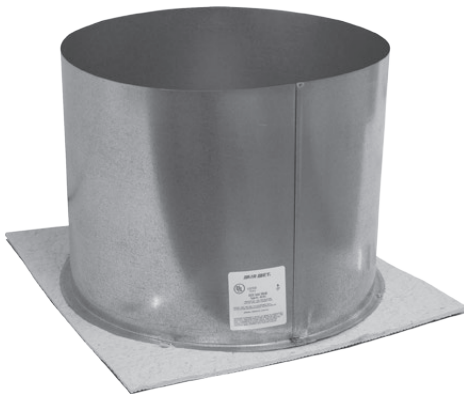
Steep Pitch Flashing



Tall Cone Flashing

- UL Listed 103 HT (2100°)
- Galvanized steel or optional aluminum construction

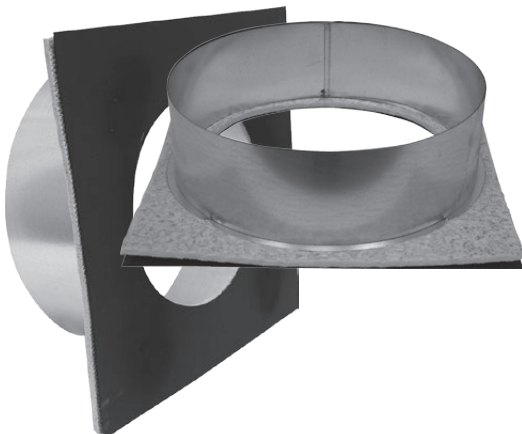
Part #	Description
8SBF	Standard Flashing, Adjustable 0/12 -6/12
8SBFT	Tall Cone Flashing (Flat Roof)
8SBFX	Steep Pitch Flashing (7/12-12/12)
8SBFY	Steep Pitch Flashing (13/12-18/12)
8SBFZ	Steep Pitch Flashing (19/12-24/12)
8SBF-S	Standard Flashing, Adjustable (0/12-6/12), Aluminum
8SBFT-S	Tall Cone Flashing, Aluminum
8SBFX-S	Steep Pitch Flashing (7/12-12/12), Aluminum



Firestop & Joist Shield

- Used between floors of living spaces to ensure ample space around chimney for proper fire protection
- Galvanized steel construction with fire retardant insulation layer
- May be used from upper floor facing down or lower floor facing up

Part #	Description
8SJS	Firestop & Joist Shield

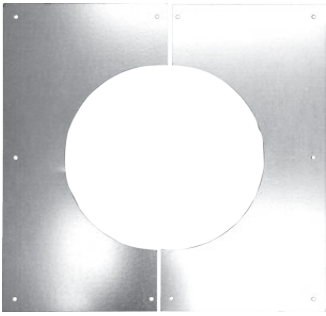


Wall Thimble

- Used in through-the-wall installations to ensure ample space around chimney for proper fire protection
- Galvanized steel base, fire retardant insulation layer, 2-ply galvanized steel sleeve

Part #	Description
8SWT	Wall Thimble

Weather Shield



- Used in through-the-wall installations to provides weather protection for exterior wall
- Similar to roof flashing in purpose
- Galvanized steel construction

Part #	Description
8SWSH	Weather Shield (pair)

Face Plate



- Attaches to Tee for through-the-wall installations
- Galvanized steel construction
- Painted matte black finish

Part #	Description
8SFP	Face Plate (Matte Black)

Starter Section



- UL Listed 103 HT (2100°)
- The ideal transition from appliance-supplied pipe to the AirJet system in through-the-roof applications
- Acts as safety valve at extremely high temperatures by inhaling cool air from outside the chimney pipe to maintain safe, even temperature inside
- Air-insulated, triple-wall design
- Stainless steel inner; aluminized steel intermediate; galvanized or stainless steel outer
- Snap-Lock design for easy assembly

Part #	Description
8SS	Starter Section (required for 2100°)

8" Diameter



Attic Insulation Shield

- UL Listed 103 HT (2100°)
- Typically houses the Starter Section and provides an added layer of protection between the chimney system and attic insulation
- Galvanized steel construction
- Includes Storm Collar

Part #	Description
8SIS	Attic Insulation Shield

Masonry Anchor Plate w/ 1' Pipe



- UL Listed 103 HT (2100°)
- For use with zero-clearance and masonry fireplaces
- Mounts directly to fireplace outlet
- 1-foot section of AirJet All Fuel pipe mounted to heavy gauge steel plate

Part #	Description
8SAP	Masonry Anchor Plate with 1' Pipe

7" to 8" All-Fuel Adapter



- UL Listed 103 HT (2100°)
- Transition from a stock 7" appliance pipe to the 8" AirJet system
- Air-insulated, triple-wall design
- Stainless steel inner; aluminized steel intermediate; galvanized steel outer

Part #	Description
7Jx8S	7" to 8" All-Fuel Adapter

2100° High Temperature Kit



- UL Listed 103 HT (2100°)
- Conveniently packages the Starter Section and Attic Insulation Shield

Part #	Description
8SHTK	8" 2100° High Temp Kit

Chase Kit

Includes

- Termination Cap
- Standard Flashing
- Storm Collar
- Ceiling Cover/
Base Support
- Instructions



Notes:

- Also suitable for manufactured/modular homes
- In most cases, this application requires use of the 8SHTK (High Temperature Kit)

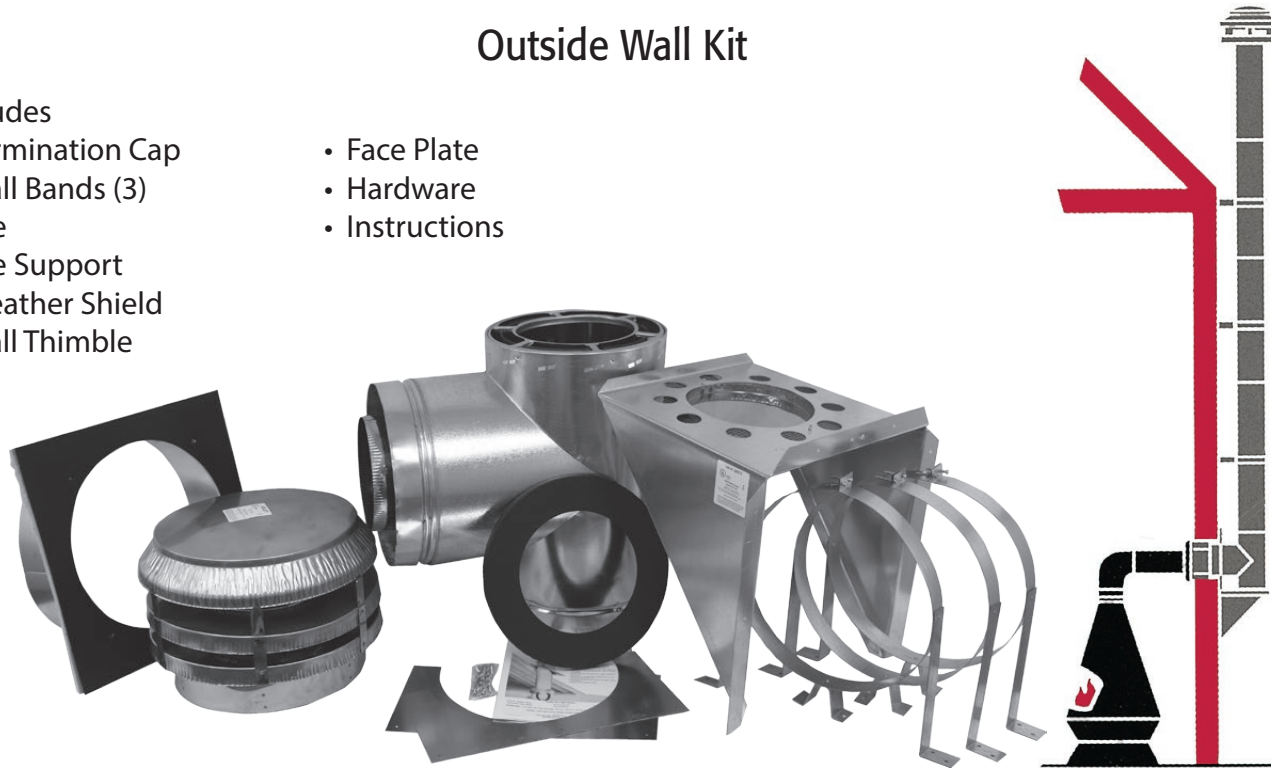
Part #	Description
8SCKS	8" Chase Kit
8SCKSS	8" Chase Kit with Spark Arrestor JetCap

8" Diameter

Outside Wall Kit

- Includes
- Termination Cap
 - Wall Bands (3)
 - Tee
 - Tee Support
 - Weather Shield
 - Wall Thimble

- Face Plate
 - Hardware
 - Instructions



- Notes:
- Also suitable for manufactured/modular homes

Part #	Description
8SOTK	8" Outside Wall Kit with Standard Tee
8SOTK-S	8" Outside Wall Kit with Stainless Tee
8SOTKS	8" Outside Wall Kit w/ Spark Arrestor JetCap

Roof Support Kit

- Includes
- Termination Cap
 - Standard Flashing
 - Storm Collar
 - Roof Support
 - Starter Section
 - Instructions

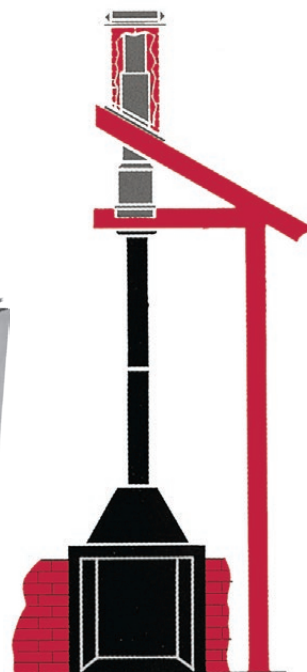


Part #	Description
8SRSK	8" Roof Support Kit
8SRSKX	8" Roof Support Kit w/ Steep Pitch Flashing
8SRSKS	8" Roof Support Kit w/Spark Arrestor JetCap

Housing Kits

Includes

- Stainless Steel Cap
- Painted Wall Panels (4)
- Two-piece Flashing
- 18" Stainless Steel Telescoping Connector
- Ceiling Cover/Base Support
- Hardware
- Instructions



Part #	Description
8H36R	17 x 17 x 36 Housing Kit, Plain Red
8H36W	17 x 17 x 36 Housing Kit, Plain White
8HL36R	17 x 17 x 36 Housing Kit, Red Brick
8HL36T	17 x 17 x 36 Housing Kit, Tan Brick
8HL36W	17 x 17 x 36 Housing Kit, White Brick
8H48R	17 x 17 x 48 Housing Kit, Plain Red
8H48W	17 x 17 x 48 Housing Kit, Plain White
8HL48R	17 x 17 x 48 Housing Kit, Red Brick
8HL48T	17 x 17 x 48 Housing Kit, Tan Brick
8HL48W	17 x 17 x 48 Housing Kit, White Brick
8HL60R	17 x 17 x 60 Housing Kit, Red Brick
8HL60W	17 x 17 x 60 Housing Kit, White Brick

10" Diameter



Pipe

- Listed to UL 103 (1700°)
- Air-insulated, quadruple-wall design
- Stainless steel inner; two aluminized steel intermediate layers; galvanized steel outer
- Lightweight design for easy handling
- Snap-Lock design for easy assembly

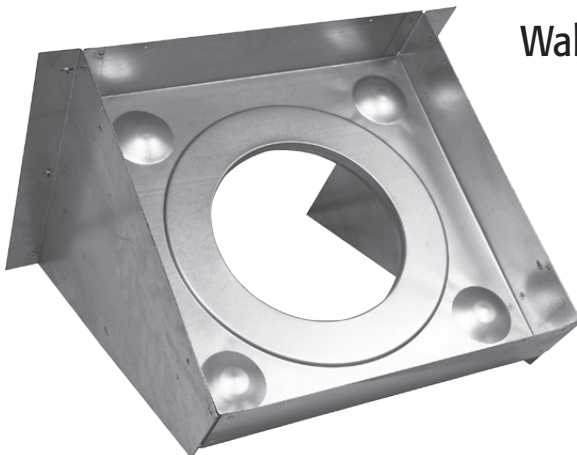
Part #	Description
10J2	Round Pipe, 2' Length
10J3	Round Pipe, 3' Length



Tee & Tee Cap

- Designed for through-the-wall (exterior) installations
- Listed to UL 103 (1700°)
- Air-insulated, quadruple-wall design
- Stainless steel inner; two aluminized steel intermediate layers; galvanized steel outer
- Snap-Lock design

Part #	Description
10JT	Insulated Tee w/ Cap



Wall (Tee) Support

- Supports Tee on exterior wall
- Galvanized steel construction

Part #	Description
10JWS	Wall Support



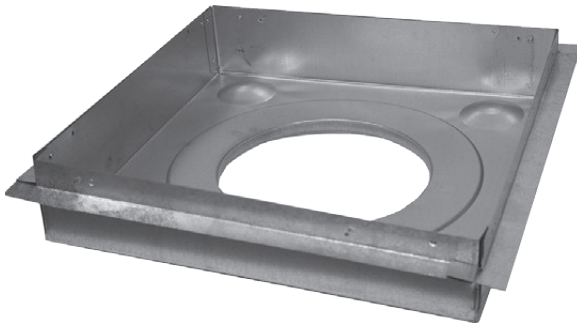
10J30

Offsets

- Listed to UL 103 (1700°)
- Air-insulated, quadruple-wall design
- Stainless steel inner; two aluminized steel intermediate layers; galvanized steel outer
- Snap-Lock design for easy assembly

Part #	Description
10J15	15° Offset
10J15-S	15° Offset, Stainless Jacket
10J30	30° Offset

Base Support



- Supports
- Galvanized steel construction

Part #	Description
10JBS	Base Support

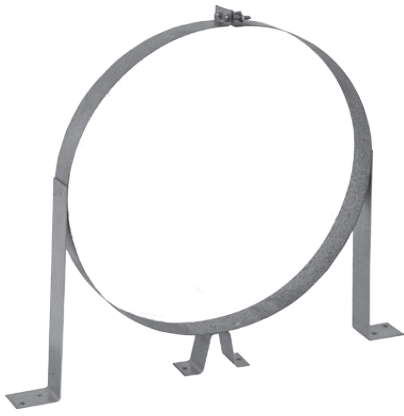
Roof Support

- Supports the chimney system in "A" frame or cathedral ceiling installations
- Galvanized steel construction
- Trim to roof/ceiling slope

Part #	Description
10JRS	Roof Support (Cathedral)



10" Diameter



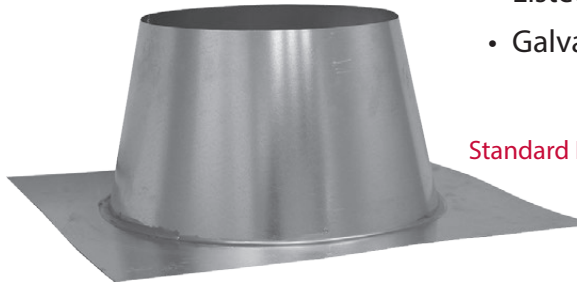
Wall Band

- For use on exterior wall installations
- Galvanized steel construction

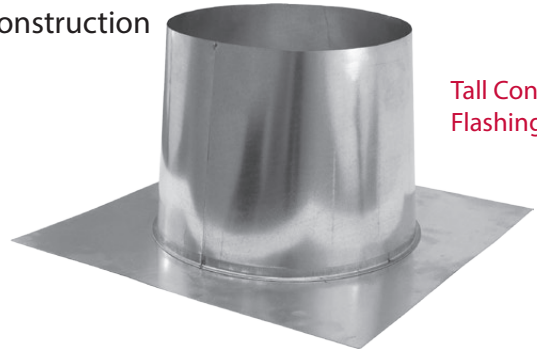
Part #	Description
10JWB	Wall Band

Flashing

- Listed to UL 103 (1700°)
- Galvanized steel construction



Standard Flashing

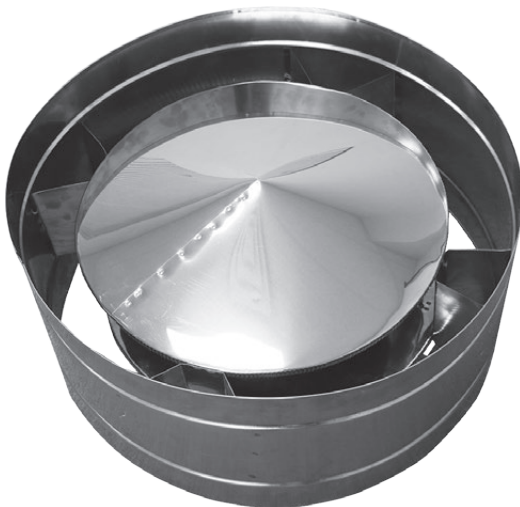


Tall Cone Flashing

Part #	Description
10JBF	Boot Flashing (Adjustable 0/12 -6/12)
10JBFT	Tall Cone Flashing (Flat Roof)
10JBFX	High Pitch Flashing (7/12-12/12)
10JBFY	High Pitch Flashing (13/12-18/12)
10JBFZ	High Pitch Flashing (19/12-24/12)

Termination Cap

- Listed to UL 103 (1700°)
- Stainless steel and aluminum construction



Part #	Description
10JU	JetCap



Storm Collar

- Listed to UL 103 (1700°)
- Used to keep the boot flashing leak free
- Galvanized steel construction (standard) or optional Aluminum construction

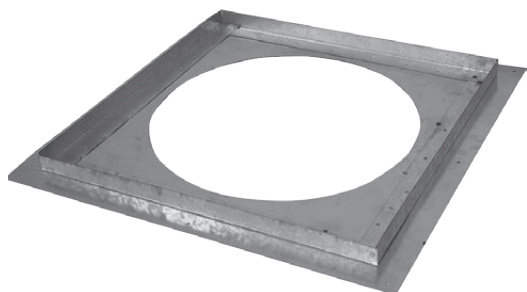
Part #	Description
10JSC	Storm Collar



Face Plate

- Attaches to Tee for through-the-wall installations
- Galvanized steel construction
- Painted matte black finish

Part #	Description
10JFP	Face Plate (Matte Black)



Firestop

- Used between floors of living spaces to ensure ample space around chimney for proper fire protection
- Galvanized steel construction

Part #	Description
10JFS	Firestop



Stove Pipe Adapter

- Provides drip-free hookup of triple wall pipe to single wall on oil installations, where starter section is not required.
- Stainless steel construction

Part #	Description
10JSPA	Stove Pipe Adapter

10" Diameter

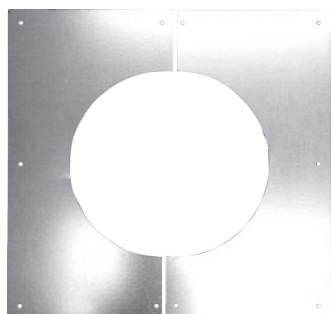


Masonry Anchor Plate w/ 1' Pipe

- Listed to UL 103 (1700°)
- For use with zero-clearance and masonry fireplaces
- Mounts directly to fireplace outlet
- 1-foot section of AirJet All Fuel pipe mounted to heavy gauge steel plate

Part #	Description
10JAP	Masonry Anchor Plate w/ 1' Pipe

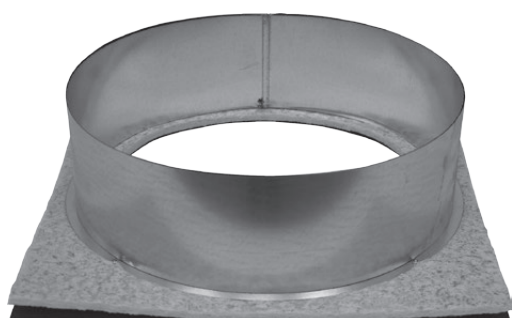
Weather Shield



- Used in through-the-wall installations to provides weather protection for exterior wall
- Similar to roof flashing in purpose
- Galvanized steel construction

Part #	Description
10JWSH	Weather Shield (pair)

Wall Thimble

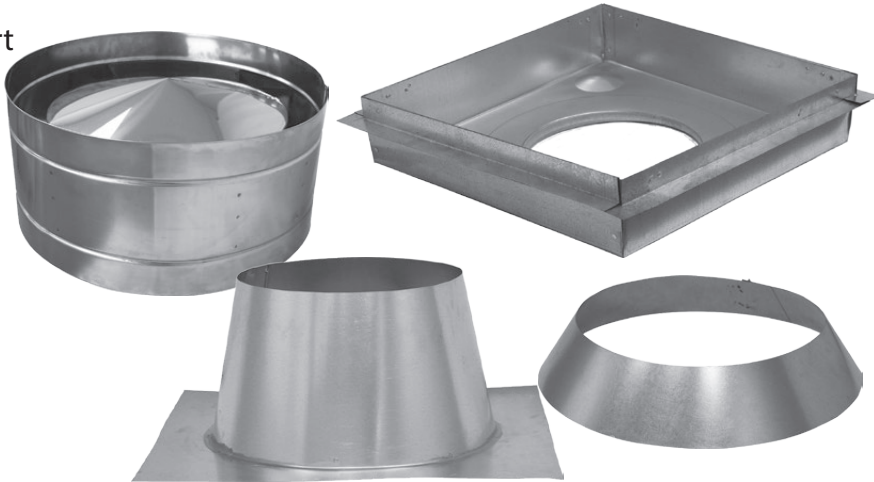


- Used in through-the-wall installations to ensure ample space around chimney for proper fire protection
- Galvanized steel base, fire retardant insulation layer, 2-ply galvanized steel top
- Painted, matte black finish on face

Part #	Description
10JWT	Wall Thimble

Chase Kit

- Includes
- Termination Cap
 - Standard Flashing
 - Storm Collar
 - Base Support
 - Instructions



Part #	Description
10JCK	Chase Kit

Outside Wall Kit

- Includes
- Termination Cap
 - Wall Bands (3)
 - Tee
 - Wall Support
 - Weather Shield
 - Wall Thimble
 - Face Plate
 - Hardware
 - Instructions



Part #	Description
10JOWK	Outside Wall Kit

10" Diameter

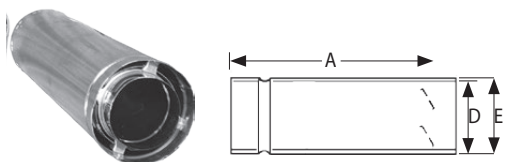
Roof Support Kit

- Includes
- Termination Cap
 - Standard Flashing
 - Storm Collar
 - Roof Support
 - Instructions



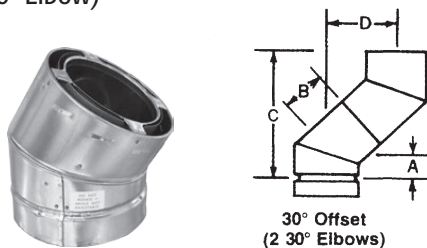
Part #	Description
10JRSK	Roof Support Kit

Round Pipe



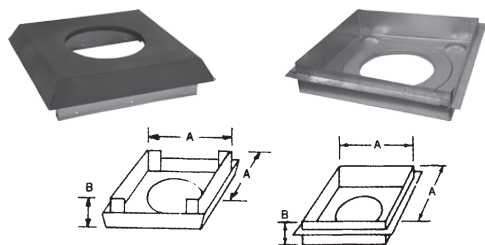
A	Stated Length	E: 6" 8 ⁵ / ₈ "
D	Stated Diameter	E: 8" 12 ⁵ / ₈ "
		E: 10" 15 ¹ / ₄ "

Offset (30° Elbow)



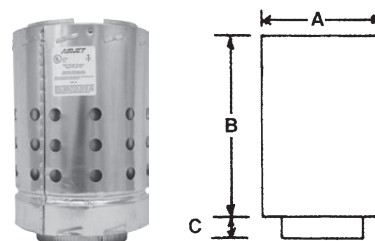
	A	B	C	D
6S30	4 ⁵ / ₁₆ "	2 ⁷ / ₈ "	13 ³ / ₈ "	4 ³ / ₈ "
8S30	3 ³ / ₁₆ "	4 ⁹ / ₁₆ "	17"	5"
10J30	3 ⁵ / ₈ "	7 ¹ / ₂ "	20 ¹ / ₁₆ "	5 ¹³ / ₁₆ "

Ceiling Cover (6" & 8") and Base Support (10")



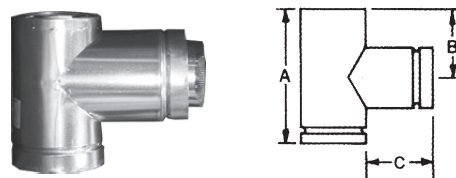
	A	B
6SCCB	12 ⁵ / ₈ "	4"
8SCCB	14 ¹ / ₄ "	4"
10JBS	19"	4"

Starter Section



	A	B	C
6SS	8 ⁵ / ₈ "	12"	1 ⁷ / ₈ "
8SS	12 ⁵ / ₈ "	12"	1 ⁷ / ₈ "

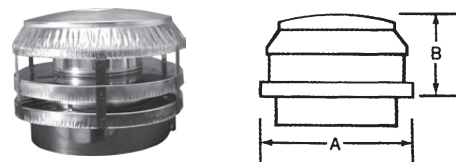
Adjustable Snout Tee



For through-the-wall installation.

	A	B	C
6ST	14 ⁵ / ₈ "	6 ¹ / ₄ "	adjustable, 4 ¹ / ₂ " to 8 ¹ / ₂ "
8ST	20 ¹ / ₂ "	9 ³ / ₁₆ "	adjustable, 4 ¹ / ₂ " to 8 ¹ / ₂ "
10ST	25 ⁹ / ₁₆ "	12 ¹⁵ / ₁₆ "	8.25"

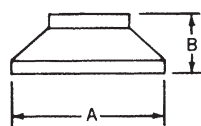
Termination Cap



	A	B
6SU	11"	5 ¹ / ₄ "
8SU	15"	11 ¹ / ₈ "
10JU	25"	14 ¹ / ₁₆ "

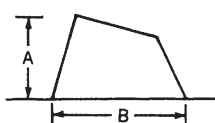
All Fuel Dimensions

Storm Collar



	A	B
6SC	12 ⁵ / ₈ "	2 ¹ / ₄ "
8SC	16 ³¹ / ₃₂ "	3 ¹ / ₄ "
10JSC	19 ¹ / ₂ "	4"

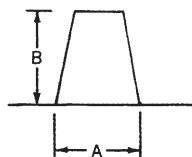
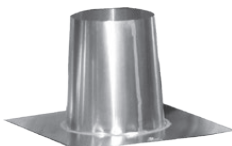
Adjustable Roof Flashing



	A	B
6SBF	5 ⁵ / ₈ "	13 ³ / ₄ "
8SBF	7 ¹ / ₂ "	16 ¹ / ₄ "
10JBF	5"	20"

Adjusts from 0/12 to 6/12.

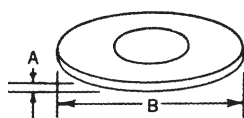
Tall Cone Flashing



	A	B
6SBFT	12"	12"
8SBFT	14 ⁵ / ₈ "	12"
10JBFT	16 ¹ / ₄ "	12"

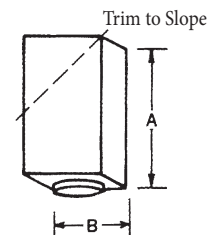
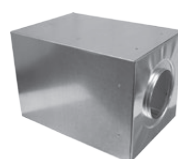
Use on flat roofs to protect from standing water or snow.

Face Plate



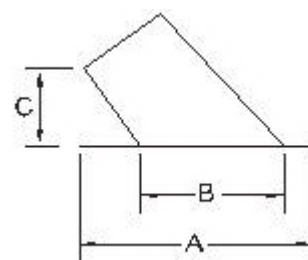
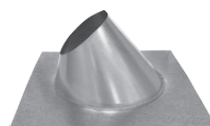
	A	B
6SFP	1/2"	8 ¹¹ / ₁₆ "
8SFP	1/2"	12 ¹¹ / ₁₆ "

Roof Support



	A	B
6SRS	18"	12 ¹¹ / ₁₆ "
8SRS	18"	14 ⁵ / ₁₆ "
10JRS	18"	19 ¹ / ₁₆ "

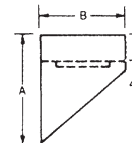
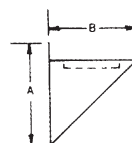
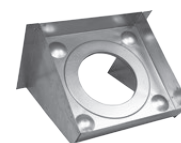
Steep Pitch Flashing



	A	B	C
6SBFX	21 ⁷ / ₁₆ "	13 ¹¹ / ₁₆ "	4 ¹ / ₂ "
8SBFX	24 ⁵ / ₈ "	16 ¹ / ₄ "	4 ³ / ₄ "
SBFY	13/12 to 18/12		
SBFZ	19/12 to 24/12		

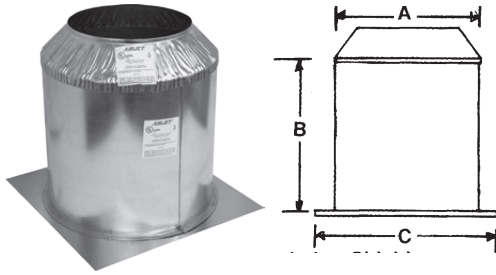
Specify pipe and pitch of roof.

Tee Support (6" & 8") and Wall Support (10")



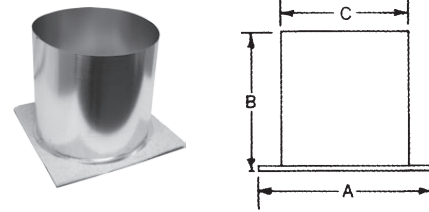
	A	B
6STS	16 ¹ / ₄ "	12 ⁵ / ₈ "
8STS	16 ¹ / ₄ "	15 ¹ / ₄ "
10JWS	22"	19"

Attic Insulation Shield



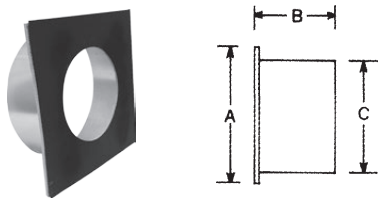
	A	B	C
6SIS	12 $\frac{1}{2}$ "	11 $\frac{1}{2}$ "	14 $\frac{5}{8}$ "
8SIS	16 $\frac{1}{2}$ "	11 $\frac{1}{2}$ "	18 $\frac{3}{8}$ "

Joist Shield



	A	B	C
6SJS	14 $\frac{5}{8}$ "	12"	12 $\frac{5}{8}$ "
8SJS	16 $\frac{1}{2}$ "	12"	14 $\frac{3}{8}$ "

Wall Thimble



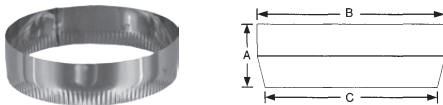
	A	B	C
6SWT	14 $\frac{5}{8}$ "	4 $\frac{1}{2}$ " to 8"	12 $\frac{7}{8}$ "
8SWT	16 $\frac{1}{2}$ "	4 $\frac{1}{2}$ " to 8"	14 $\frac{5}{8}$ "
10JWT	21 $\frac{13}{16}$ "	4 $\frac{1}{2}$ " to 8"	19 $\frac{1}{4}$ "

Weather Shield



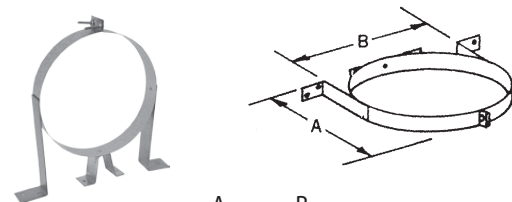
	A
6SWSH	14 $\frac{5}{8}$ "
8SWSH	16 $\frac{1}{2}$ "
10JWSH	21 $\frac{13}{15}$ "

Stove Pipe Adapter (stainless)



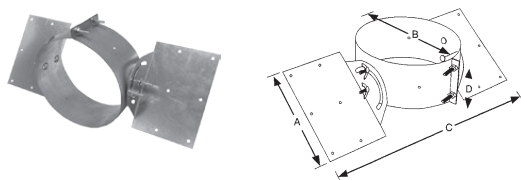
	A	B	C
6SPA	2"	6 $\frac{1}{16}$ "	5 $\frac{3}{4}$ "
8SPA	2"	8 $\frac{1}{16}$ "	7 $\frac{3}{4}$ "
10SPA	2"	10 $\frac{1}{16}$ "	9 $\frac{3}{4}$ "

Wall Band



	A	B
6SWB	10 $\frac{3}{4}$ "	8 $\frac{5}{8}$ "
8SWB	14 $\frac{3}{4}$ "	12 $\frac{5}{8}$ "
10JWB	17 $\frac{1}{4}$ "	15 $\frac{1}{4}$ "

Adjustable Pass-Thru Support



	A	B	C	D
6APTS	8"	8 $\frac{3}{4}$ "	20 $\frac{1}{8}$ "	4"
8APTS	8"	12 $\frac{3}{4}$ "	24 $\frac{1}{8}$ "	4"

FlexJet Chimney Liners

for use with gas or propane fired appliances
Listed UL 1777



FlexJet Standard Kit

- Everything needed for a typical lining project:
 - FlexJet liner with male termination
 - Termination Cap
 - Storm Collar
 - Mortar Guard
 - Flashing
- UL Listed 1777
 - Construction
 - Liner: 2-ply aluminum
 - Cap: Aluminum and galvanized steel
 - Other items: galvanized steel



Part #	Description
3FSK25	3" Diameter; 25' FlexJet Standard Kit
3FSK35	3" Diameter; 35' FlexJet Standard Kit

4FSK25	4" Diameter; 25' FlexJet Standard Kit
4FSK35	4" Diameter; 35' FlexJet Standard Kit

5FSK25	5" Diameter; 25' FlexJet Standard Kit
5FSK35	5" Diameter; 35' FlexJet Standard Kit

55FSK25	5.5" Diameter; 25' FlexJet Standard Kit
55FSK35	5.5" Diameter; 35' FlexJet Standard Kit

6FSK25	6" Diameter; 25' FlexJet Standard Kit
6FSK35	6" Diameter; 35' FlexJet Standard Kit

7FSK25	7" Diameter; 25' FlexJet Standard Kit
7FSK35	7" Diameter; 35' FlexJet Standard Kit

8FSK25	8" Diameter; 25' FlexJet Standard Kit
8FSK35	8" Diameter; 35' FlexJet Standard Kit

10FSK25	10" Diameter; 25' FlexJet Standard Kit
10FSK35	10" Diameter; 35' FlexJet Standard Kit

FlexJet Multi-Purpose Kit



- A slight variation on the standard kit which serves as the base package for when a Splicer Section (extension) will be needed:
 - FlexJet liner with male termination
 - Termination Cap
 - Storm Collar
 - Single Wall Connector
 - Flashing
- UL Listed 1777
- Construction
 - Liner: 2-ply aluminum
 - Cap: Aluminum and galvanized steel
 - Other items: galvanized steel

Part #	Description
3MPK25	3" Diameter; 25' FlexJet Multi-Purpose Kit
3MPK35	3" Diameter; 35' FlexJet Multi-Purpose Kit

4MPK25	4" Diameter; 25' FlexJet Multi-Purpose Kit
4MPK35	4" Diameter; 35' FlexJet Multi-Purpose Kit

5MPK25	5" Diameter; 25' FlexJet Multi-Purpose Kit
5MPK35	5" Diameter; 35' FlexJet Multi-Purpose Kit

55MPK25	5.5" Diameter; 25' FlexJet Multi-Purpose Kit
55MPK35	5.5" Diameter; 35' FlexJet Multi-Purpose Kit

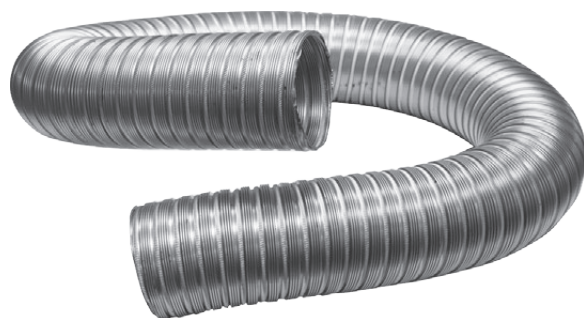
6MPK25	6" Diameter; 25' FlexJet Multi-Purpose Kit
6MPK35	6" Diameter; 35' FlexJet Multi-Purpose Kit

7MPK25	7" Diameter; 25' FlexJet Multi-Purpose Kit
7MPK35	7" Diameter; 35' FlexJet Multi-Purpose Kit

8MPK25	8" Diameter; 25' FlexJet Multi-Purpose Kit
8MPK35	8" Diameter; 35' FlexJet Multi-Purpose Kit

10MPK25	10" Diameter; 25' FlexJet Multi-Purpose Kit
10MPK35	10" Diameter; 35' FlexJet Multi-Purpose Kit

10' Splicer Section



- Listed to UL 1777
- 2-ply aluminum construction
- 10 feet long uncompressed

Part #	Description
3FJ10	3" Diameter Splicer Section
4FJ10	4" Diameter Splicer Section
5FJ10	5" Diameter Splicer Section
55FJ10	5.5" Diameter Splicer Section
6FJ10	6" Diameter Splicer Section
7FJ10	7" Diameter Splicer Section
8FJ10	8" Diameter Splicer Section
10FJ10	10" Diameter Splicer Section

Single Wall Connector/Splicer



- Listed to UL 1777
- Use to join sections of FlexJet pipe
- Aluminum construction

Part #	Description
3FJS	3" Diameter Single Wall Connector
4FJS	4" Diameter Single Wall Connector
5FJS	5" Diameter Single Wall Connector
55FJS	5.5" Diameter Single Wall Connector
6FJS	6" Diameter Single Wall Connector
7FJS	7" Diameter Single Wall Connector
8FJS	8" Diameter Single Wall Connector
10FJS	10" Diameter Single Wall Connector

B Vent Connector (base)



- Listed to UL 1777
- Used to connect to an AirJet b-vent system
- Galvanized steel and aluminum construction

Part #	Description
3FJB	3" Diameter B-Vent Connector
4FJB	4" Diameter B-Vent Connector
5FJB	5" Diameter B-Vent Connector
55FJB	5.5" Diameter B-Vent Connector
6FJB	6" Diameter B-Vent Connector
7FJB	7" Diameter B-Vent Connector
8FJB	8" Diameter B-Vent Connector
10FJB	10" Diameter B-Vent Connector

Male Top Terminator



- Listed to UL 1777
- Used to terminate a splicer section
- Galvanized steel and aluminum construction

Part #	Description
3FJM	3" Diameter Terminator
4FJM	4" Diameter Terminator
5FJM	5" Diameter Terminator
55FJM	5.5" Diameter Terminator
6FJM	6" Diameter Terminator
7FJM	7" Diameter Terminator
8FJM	8" Diameter Terminator
10FJM	10" Diameter Terminator



Mortar Guard

- Listed to UL 1777
- Galvanized steel construction

Part #	Description
3FMG	3" Diameter Mortar Guard
4FMG	4" Diameter Mortar Guard
5FMG	5" Diameter Mortar Guard
55FMG	5.5" Diameter Mortar Guard
6FMG	6" Diameter Mortar Guard
7FMG	7" Diameter Mortar Guard
8FMG	8" Diameter Mortar Guard
10FMG	10" Diameter Mortar Guard



Termination Cap

- Listed to UL 1777
- Aluminum construction

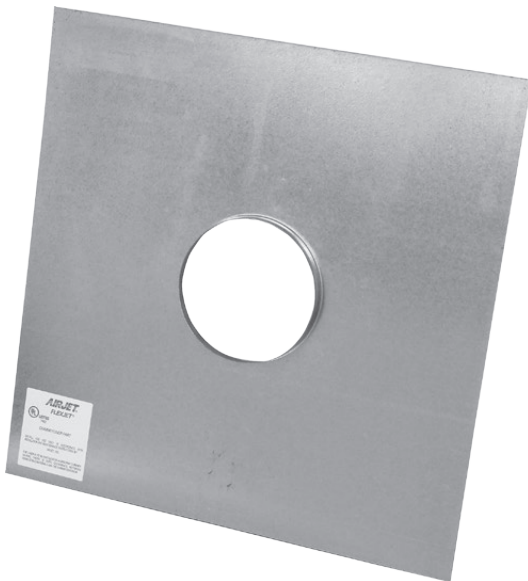
Part #	Description
3JC	3" Diameter JetCap
4JC	4" Diameter JetCap
5JC	5" Diameter JetCap
55JC	5.5" Diameter JetCap
6JC	6" Diameter JetCap
7JC	7" Diameter JetCap
8JC	8" Diameter JetCap
10JC	10" Diameter JetCap

Storm Collar



- Listed to UL 1777
- Galvanized steel construction

Part #	Description
3SC	3" Diameter Storm Collar
4SC	4" Diameter Storm Collar
5SC	5" Diameter Storm Collar
55SC	5.5" Diameter Storm Collar
6SC	6" Diameter Storm Collar
7SC	7" Diameter Storm Collar
8SC	8" Diameter Storm Collar
10SC	10" Diameter Storm Collar



Flashing

- Listed to UL 1777
- Galvanized steel construction

Part #	Description
3FJF	3" Diameter Flashing
4FJF	4" Diameter Flashing
5FJF	5" Diameter Flashing
55FJF	5.5" Diameter Flashing
6FJF	6" Diameter Flashing
7FJF	7" Diameter Flashing
8FJF	8" Diameter Flashing
10FJF	10" Diameter Flashing



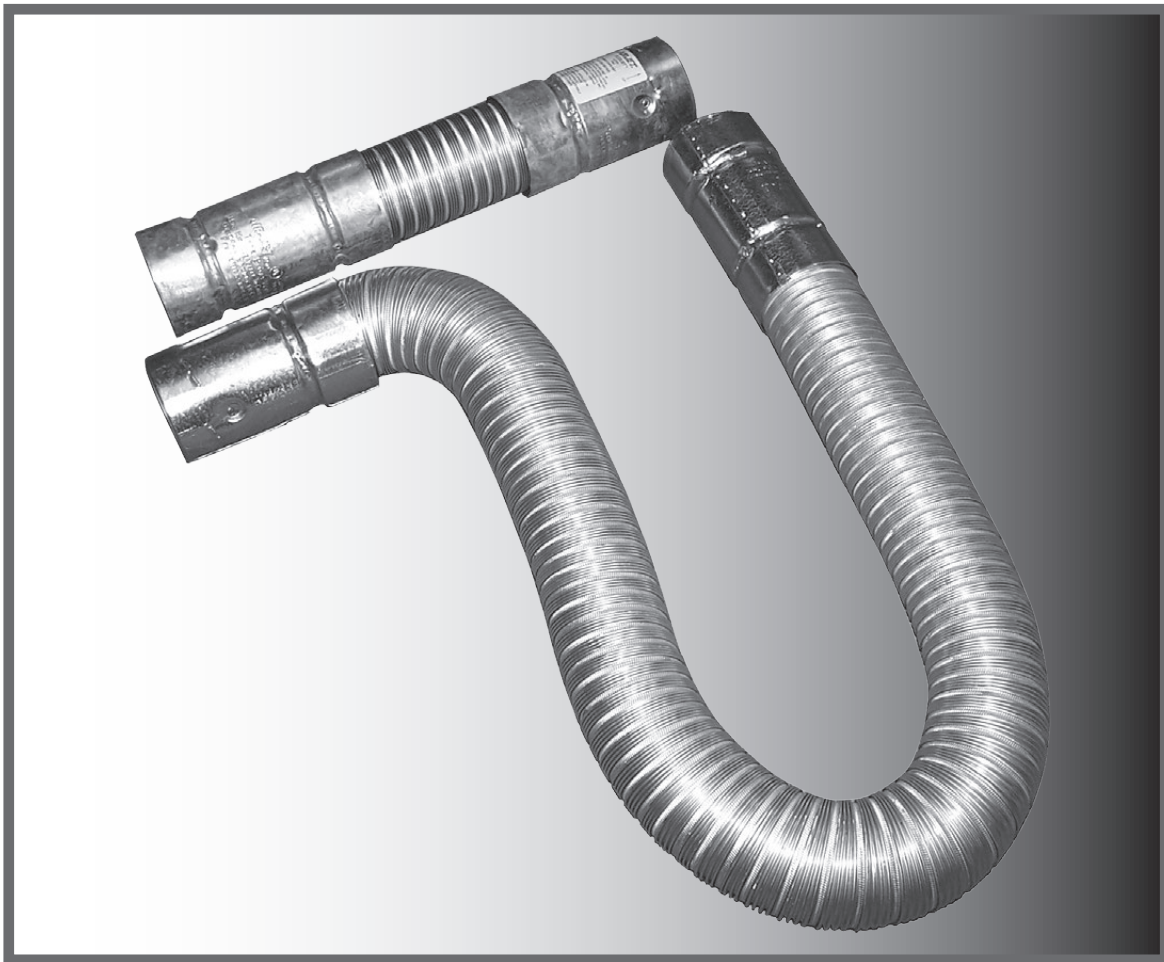
Starter Cone

- Listed to UL 1777
- Galvanized steel construction
- Attaches to a rope and the FlexJet liner to pull the liner up or down through the chimney

Part #	Description
3FS	3" Diameter Starter Cone
4FS	4" Diameter Starter Cone
5FS	5" Diameter Starter Cone
55FS	5.5" Diameter Starter Cone
6FS	6" Diameter Starter Cone
7FS	7" Diameter Starter Cone
8FS	8" Diameter Starter Cone
10FS	10" Diameter Starter Cone

Flexible B-vent Connectors

for use with gas or propane fired appliances

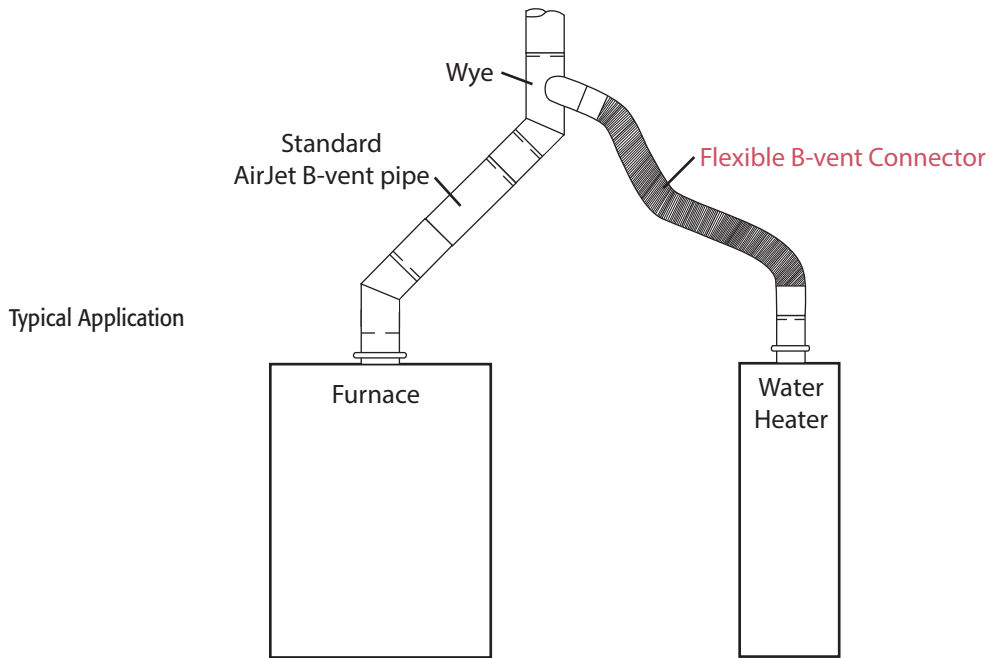


Flexible B-vent Connectors

Note:

These gas appliance connection assemblies are available

- in diameters of 3, 4, & 5 inches
- in lengths of 2, 3, 4, & 5 feet
- with Snap-Lock male and female terminations or with Snap-Lock male termination and universal female termination



with Snap-Lock male and female terminations



with Snap-Lock male and universal female terminations



with Snap-Lock Male & Female Connectors

- 2-ply aluminum construction of flexible pipe, aluminum and galvanized steel construction of terminations

Part #	Description
3FJDWC2	3" Diameter, Snap-Lock Connectors, 2' Length
3FJDWC3	3" Diameter, Snap-Lock Connectors, 3' Length
3FJDWC4	3" Diameter, Snap-Lock Connectors, 4' Length
3FJDWC5	3" Diameter, Snap-Lock Connectors, 5' Length
4FJDWC2	4" Diameter, Snap-Lock Connectors, 2' Length
4FJDWC3	4" Diameter, Snap-Lock Connectors, 3' Length
4FJDWC4	4" Diameter, Snap-Lock Connectors, 4' Length
4FJDWC5	4" Diameter, Snap-Lock Connectors, 5' Length
5FJDWC2	5" Diameter, Snap-Lock Connectors, 2' Length
5FJDWC3	5" Diameter, Snap-Lock Connectors, 3' Length
5FJDWC4	5" Diameter, Snap-Lock Connectors, 4' Length
5FJDWC5	5" Diameter, Snap-Lock Connectors, 5' Length

with Snap-Lock Male & Universal Female Connectors

- 2-ply aluminum construction of flexible pipe, aluminum and galvanized steel construction of terminations

Part #	Description
3FJDWUC2	3" Diameter, Snap-Lock/Universal Connectors, 2' Length
3FJDWUC3	3" Diameter, Snap-Lock/Universal Connectors, 3' Length
3FJDWUC4	3" Diameter, Snap-Lock/Universal Connectors, 4' Length
3FJDWUC5	3" Diameter, Snap-Lock/Universal Connectors, 5' Length
4FJDWUC2	4" Diameter, Snap-Lock/Universal Connectors, 2' Length
4FJDWUC3	4" Diameter, Snap-Lock/Universal Connectors, 3' Length
4FJDWUC4	4" Diameter, Snap-Lock/Universal Connectors, 4' Length
4FJDWUC5	4" Diameter, Snap-Lock/Universal Connectors, 5' Length
5FJDWUC2	5" Diameter, Snap-Lock/Universal Connectors, 2' Length
5FJDWUC3	5" Diameter, Snap-Lock/Universal Connectors, 3' Length
5FJDWUC4	5" Diameter, Snap-Lock/Universal Connectors, 4' Length
5FJDWUC5	5" Diameter, Snap-Lock/Universal Connectors, 5' Length

Gas Venting Systems

for use with gas or propane fired appliances
Listed UL 441



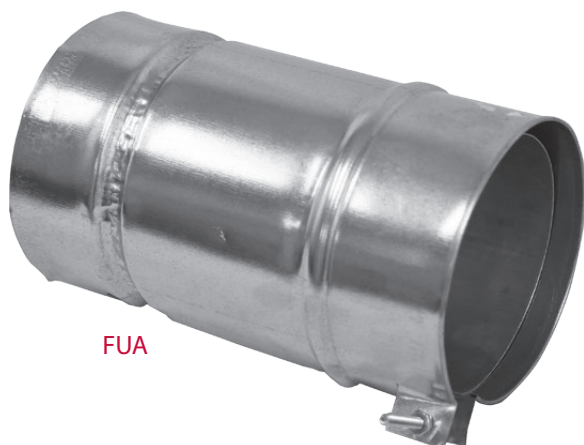


Round Pipe

- Listed to UL 441
- Double-wall construction
- Self-oxidizing aluminum inner liner and heavy gauge galvanized steel outer shell
- Rolled ends for increased strength
- Snap-Lock design for easy assembly

Part #	Description
3G18	3" Round pipe, 18" Length
3G1	3" Round pipe, 1' Length
3G2	3" Round pipe, 2' Length
3G3	3" Round pipe, 3' Length
3G4	3" Round pipe, 4' Length
3G5	3" Round pipe, 5' Length
4G18	4" Round pipe, 18" Length
4G1	4" Round pipe, 1' Length
4G2	4" Round pipe, 2' Length
4G3	4" Round pipe, 3' Length
4G4	4" Round pipe, 4' Length
4G5	4" Round pipe, 5' Length
5G18	5" Round pipe, 18" Length
5G1	5" Round pipe, 1' Length
5G2	5" Round pipe, 2' Length
5G3	5" Round pipe, 3' Length
5G4	5" Round pipe, 4' Length
5G5	5" Round pipe, 5' Length
6G18	6" Round pipe, 18" Length
6G1	6" Round pipe, 1' Length
6G2	6" Round pipe, 2' Length
6G3	6" Round pipe, 3' Length
6G4	6" Round pipe, 4' Length
6G5	6" Round pipe, 5' Length
7G18	7" Round pipe, 18" Length
7G1	7" Round pipe, 1' Length
7G2	7" Round pipe, 2' Length
7G3	7" Round pipe, 3' Length
7G4	7" Round pipe, 4' Length
7G5	7" Round pipe, 5' Length

Fittings



FUA

- Listed to UL 441
- Double wall construction
- AR1 and AR½ are designed for use on the male end of other manufacturer's pipe or fittings.
- The FUA is designed to join the AirJet b-vent system to the b-vent system of another manufacturer.



GSW



AR1



AR½

Part #	Description
3AR1	3" Adjustable Length Pipe, 12"
3AR1/2	3" Adjustable Length Pipe/Male Adapter, 6"
3FUA	3" Female Universal Adapter
4AR1	4" Adjustable Length Pipe, 12"
4AR1/2	4" Adjustable Length Pipe/Male Adapter, 6"
4FUA	4" Female Universal Adapter
4GSW	4" Swivel Fitting, 6" Length
5AR1	5" Adjustable Length Pipe, 12"
5AR1/2	5" Adjustable Length Pipe/Male Adapter, 6"
5FUA	5" Female Universal Adapter
5GSW	5" Swivel Fitting, 6" Length
6AR1	6" Adjustable Length Pipe, 12"
6AR1/2	6" Adjustable Length Pipe/Male Adapter, 6"
6FUA	6" Female Universal Adapter
6GSW	6" Swivel Fitting, 6" Length
7AR1	7" Adjustable Length Pipe 12"
7AR1/2	7" Adjustable Length Pipe/Male Adapter, 6"
7FUA	7" Female Universal Adapter

Note:

AR1 may be used to a minimum length of 2.625" (overlap of 9.375") and a maximum of 10.5".

AR½ may be used to a minimum length of 2.625" (overlap of 3.375") and maximum of 5".

Elbows



5-90

6-60



5-90 as offset

- Listed to UL 441
- Double-wall construction
- Self-oxidizing aluminum inner liner and heavy gauge galvanized steel outer shell
- Rolled ends for increased strength
- Snap-Lock design for easy assembly

Part #	Description
3-45	3" Adjustable Elbow, 45°
3-90	3" Adjustable Elbow, 90°
4-60	4" Adjustable Elbow, 30° to 60°
4-90	4" Adjustable Elbow, 90°
5-60	5" Adjustable Elbow, 30° to 60°
5-90	5" Adjustable Elbow, 90°
6-60	6" Adjustable Elbow, 30° to 60°
6-90	6" Adjustable Elbow, 90°
7-45	7" Adjustable Elbow, 45°
7-90	7" Adjustable Elbow, 90°



Termination Cap

- Listed to UL 441
- Aluminum construction

Part #	Description
3JC	3" JetCap
4JC	4" JetCap
5JC	5" JetCap
6JC	6" JetCap
7JC	7" JetCap

Tee & Tee Cap



- Listed to UL 441
- Double-wall construction (on tee)
- Self-oxidizing aluminum inner liner and heavy gauge galvanized steel outer shell
- Rolled ends for increased strength
- Snap-Lock design for easy assembly

Part #	Description
3RT	3" Tee
3RTC	3" Tee Cap
4RT	4" Tee
4RTC	4" Tee Cap
5RT	5" Tee
5RTC	5" Tee Cap
6RT	6" Tee
6RTC	6" Tee Cap
7RT	7" Tee
7RTC	7" Tee Cap

Storm Collar



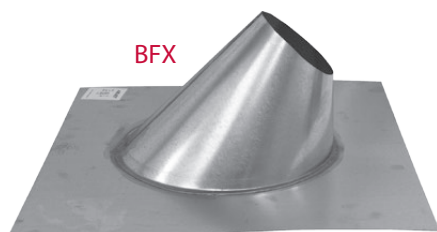
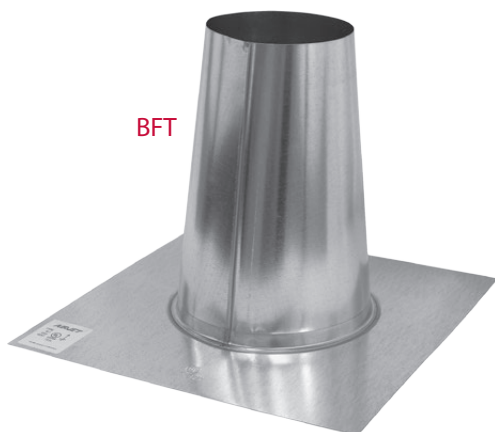
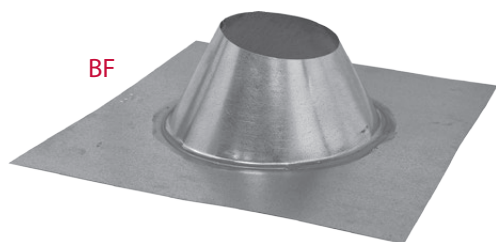
- Listed to UL 441
- Galvanized steel construction

Part #	Description
3SC	3" Storm Collar
4SC	4" Storm Collar
5SC	5" Storm Collar
6SC	6" Storm Collar
7SC	7" Storm Collar

3" - 7" Diameter

Flashing

- Listed to UL 441
- Galvanized steel construction



Part #	Description
3BF	3" Adjustable Boot Flashing (0/12-6/12)
3BFT	3" Tall Cone Flashing
3BFX	3" High Pitch Flashing (7/12-12/12)
4BF	4" Adjustable Boot Flashing (0/12-6/12)
4BFT	4" Tall Cone Flashing
4BFX	4" High Pitch Flashing (7/12-12/12)
5BF	5" Adjustable Boot Flashing (0/12-6/12)
5BFT	5" Tall Cone Flashing
5BFX	5" High Pitch Flashing (7/12-12/12)
6BF	6" Adjustable Boot Flashing (0/12-6/12)
6BFT	6" Tall Cone Flashing
6BFX	6" High Pitch Flashing (7/12-12/12)
7BF	7" Adjustable Boot Flashing (0/12-6/12)
7BFT	7" Tall Cone Flashing
7BFX	7" High Pitch Flashing (7/12-12/12)

Base Assembly

- Listed to UL 441
- Galvanized steel construction



Part #	Description
3BA	3" Base Assembly
4BA	4" Base Assembly
5BA	5" Base Assembly
6BA	6" Base Assembly
7BA	7" Base Assembly

Draft Hood Connector



- Listed to UL 441
- Double wall construction
- Self-oxidizing aluminum inner liner and heavy gauge galvanized steel outer shell
- Rolled ends for increased strength
- Aluminum extension can be formed to fit oval draft hood outlets of furnaces.

Part #	Description
3DHC	3" Draft Hood Connector
3x4DHC	3" to 4" DH Connector/Increaser
4DHC	4" Draft Hood Connector
5DHC	5" Draft Hood Connector
6DHC	6" Draft Hood Connector
7DHC	7" Draft Hood Connector



Pipe Collar

- Listed to UL 441
- Galvanized steel construction

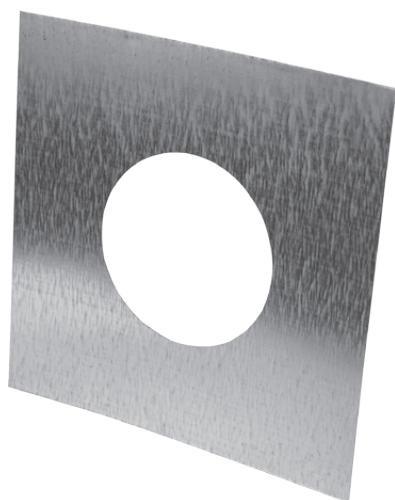
Part #	Description
3PC	3" Pipe Collar
4PC	4" Pipe Collar
5PC	5" Pipe Collar
6PC	6" Pipe Collar
7PC	7" Pipe Collar



Wall Thimble

- UL Listed 441
- Galvanized steel and aluminum construction
- Adjustable 4" to 6.5" in depth

Part #	Description
3VT	3" Wall Thimble
4VT	4" Wall Thimble
5VT	5" Wall Thimble
6VT	6" Wall Thimble
7VT	7" Wall Thimble



Firestop

- Listed to UL 441
- Galvanized steel construction

Part #	Description
3GF	3" Firestop
4GF	4" Firestop
5GF	5" Firestop
6GF	6" Firestop
7GF	7" Firestop

Interior Support Band

- Listed to UL 441
- Galvanized steel construction



Part #	Description
3ISB	3" Interior Support Band
4ISB	4" Interior Support Band
5ISB	5" Interior Support Band
6ISB	6" Interior Support Band
7ISB	7" Interior Support Band

Wye

- Listed to UL 441
- Double-wall construction
- Self-oxidizing aluminum inner liner and heavy gauge galvanized steel outer shell
- Snap-Lock design for easy assembly



Part #	Description
4x4x4-Y	4x4x4 Wye
4x4x3-Y	4x4x3 Wye
5x5x4-Y	5x5x4 Wye
5x5x3-Y	5x5x3 Wye
5x4x4-Y	5x4x4 Wye
5x4x3-Y	5x4x3 Wye
6x6x4-Y	6x6x4 Wye
6x6x3-Y	6x6x3 Wye
NOTE: Wye dimensions listed in the following order: body, base, and branch	
Example: 5x4x3-Y has 5" body, 4" base, 3" branch.	

Double Wall Increaseers

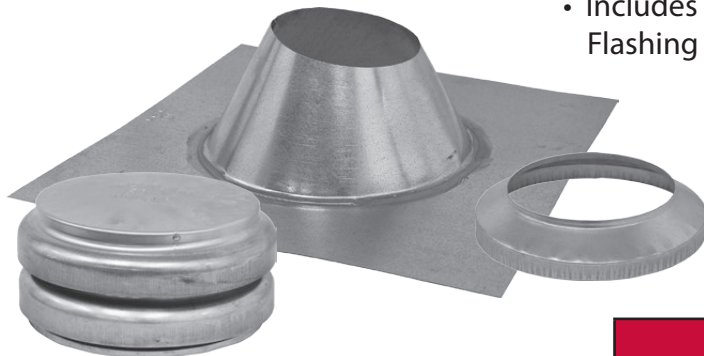


- Listed to UL 441
- Double wall construction
- Self-oxidizing aluminum inner liner and heavy gauge galvanized steel outer shell
- Snap-Lock design for easy assembly

Part #	Description
3x4	3" to 4" DW Increaseer
3x5	3" to 5" Double Wall Increaseer
3x6	3" to 6" Double Wall Increaseer
3x7	3" to 7" Double Wall Increaseer
3x8	3" to 8" Double Wall Increaseer
4x5	4" to 5" Double Wall Increaseer
4x6	4" to 6" Double Wall Increaseer
4x7	4" to 7" Double Wall Increaseer
4x8	4" to 8" Double Wall Increaseer
4x10	4" to 10" Double Wall Increaseer
4x12	4" to 12" Double Wall Increaseer
4x14	4" to 14" Double Wall Increaseer
4x16	4" to 16" Double Wall Increaseer
4x18	4" to 18" Double Wall Increaseer
4x24	4" to 24" Double Wall Increaseer
5x6	5" to 6" Double Wall Increaseer
5x7	5" to 7" Double Wall Increaseer
5x8	5" to 8" Double Wall Increaseer
5x10	5" to 10" Double Wall Increaseer
5x12	5" to 12" Double Wall Increaseer
5x14	5" to 14" Double Wall Increaseer
5x16	5" to 16" Double Wall Increaseer
5x24	5" to 24" Double Wall Increaseer
6x7	6" to 7" Double Wall Increaseer
6x8	6" to 8" Double Wall Increaseer
6x10	6" to 10" Double Wall Increaseer
6x12	6" to 12" Double Wall Increaseer
6x14	6" to 14" Double Wall Increaseer
6x16	6" to 16" Double Wall Increaseer
6x18	6" to 18" Double Wall Increaseer
6x20	6" to 20" Double Wall Increaseer
7x8	7" to 8" Double Wall Increaseer
7x10	7" to 10" Double Wall Increaseer
7x12	7" to 12" Double Wall Increaseer
7x14	7" to 14" Double Wall Increaseer
7x16	7" to 16" Double Wall Increaseer

Termination Kit A

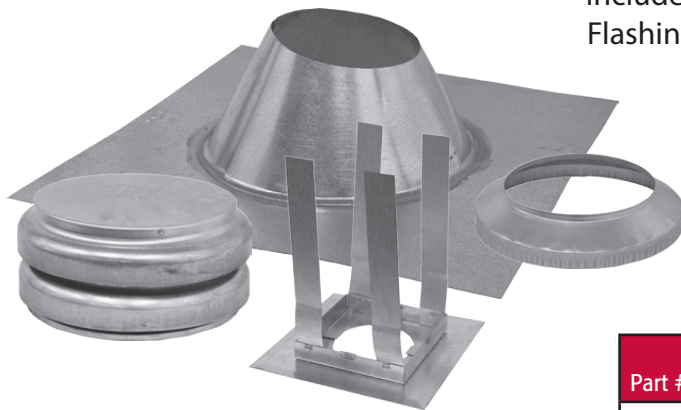
- Conveniently packages items commonly used to terminate a system
- For 3", 4", 5", and 6" systems
- Includes Termination Cap, Storm Collar and Standard Flashing



Part #	Description
3GKA	3" Cap, Collar, Flashing (0/12-6/12)
4GKA	4" Cap, Collar, Flashing (0/12-6/12)
5GKA	5" Cap, Collar, Flashing (0/12-6/12)
6GKA	6" Cap, Collar, Flashing (0/12-6/12)

Termination Kit B

- Conveniently packages items commonly used to terminate a system
- For 4", 5", and 6" systems
- Includes Termination Cap, Storm Collar, Standard Flashing, and Base Assembly



Part #	Description
4GKB	4" Cap, Collar, Flashing (0/12-6/12), Base Assembly
5GKB	5" Cap, Collar, Flashing (0/12-6/12), Base Assembly
6GKB	6" Cap, Collar, Flashing (0/12-6/12), Base Assembly

Housing Kits

- An attractive way to finish off your gas venting system
- Fits 5", 6" and 7" systems
- Includes Stainless steel Cap, four painted side panels, 2-piece flashing, 18" telescoping aluminum connector, reducer ring (7" to 6" or 7" to 5")



Part #	Size	Finish
GH36R	17 x 17 x 36	Plain Red Housing Kit
GH36T	17 x 17 x 36	Plain Tan Housing Kit
GH36W	17 x 17 x 36	Plain White Housing Kit
GHL36R	17 x 17 x 36	Simulated Red Brick Housing Kit
GHL36T	17 x 17 x 36	Simulated Tan Brick Housing Kit
GHL36W	17 x 17 x 36	Simulated White Brick Housing Kit
GH48R	17 x 17 x 48	Plain Red Housing Kit
GH48T	17 x 17 x 48	Plain Tan Housing Kit
GH48W	17 x 17 x 48	Plain White Housing Kit
GHL48R	17 x 17 x 48	Simulated Red Brick Housing Kit
GHL48T	17 x 17 x 48	Simulated Tan Brick Housing Kit
GHL48W	17 x 17 x 48	Simulated White Brick Housing Kit
GHL60R	17 x 17 x 60	Simulated Red Brick Housing Kit
GHL60T	17 x 17 x 60	Simulated Tan Brick Housing Kit
GHL60W	17 x 17 x 60	Simulated White Brick Housing Kit

Round Pipe



- Listed to UL 441
- Double-wall construction
- Self-oxidizing aluminum inner liner and heavy gauge galvanized steel outer shell
- Rolled ends for increased strength
- Snap-Lock design for easy assembly

Part #	Description
8G1	8" Round pipe, 1' Length
8G2	8" Round pipe, 2' Length
8G3	8" Round pipe, 3' Length
8G4	8" Round pipe, 4' Length
8G5	8" Round pipe, 5' Length

Fittings



AR1

- Listed to UL 441
- Double wall construction
- AR1 and AR1½ are adjustable length pipe for use on the male end of other manufacturer's pipe or fittings.
- The FUA is designed to join the AirJet b-vent system to the b-vent system of another manufacturer.

Part #	Description
8AR1	Adjustable Length Round Pipe 12"
8AR1/2	Adjustable Length/Male Adapter, 6"
8FUA	Female Universal Adapter

Elbows



- Listed to UL 441
- Double-wall construction
- Self-oxidizing aluminum inner liner and heavy gauge galvanized steel outer shell
- Rolled ends for increased strength
- Snap-Lock design for easy assembly

Part #	Description
8-60	Round 60° Adjustable Elbow
8-90	Round 90° Adjustable Elbow

Tee & Tee Cap



- Listed to UL 441
- Double-wall construction (on tee)
- Self-oxidizing aluminum inner liner and heavy gauge galvanized steel outer shell
- Rolled ends for increased strength
- Snap-Lock design for easy assembly

Part #	Description
8RT	Round Tee
8RTC	Round Tee Cap

Termination Cap



- Listed to UL 441
- Aluminum construction

Part #	Description
8JC	JetCap

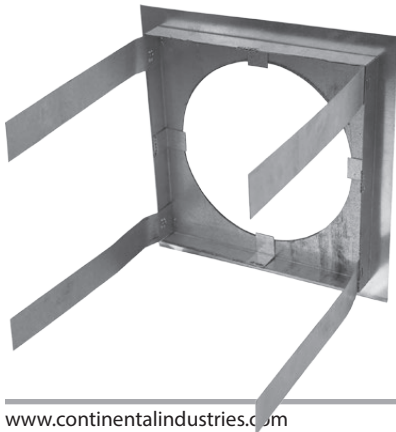
Storm Collar



- Listed to UL 441
- Galvanized steel construction

Part #	Description
8SC	Storm Collar

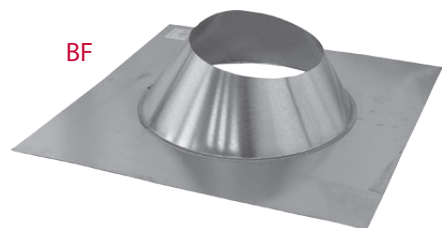
Base Assembly



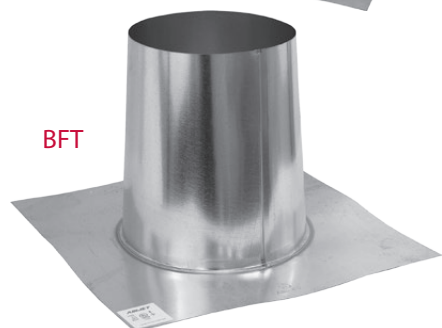
- Listed to UL 441
- Galvanized steel construction

Part #	Description
8BA	Base Assembly

Flashing



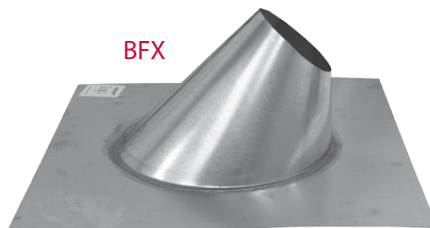
BF



BFT

- Listed to UL 441
- Galvanized steel construction

Part #	Description
8BF	Adjustable Boot Flashing, 0/12–6/12
8BFT	Tall Cone Flashing
8BFX	7/12–12/12 Flashing



BFX

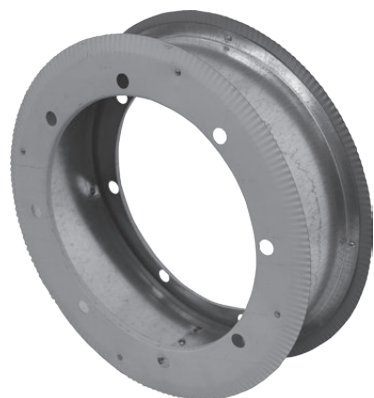
Draft Hood Connector



- Listed to UL 441
- Double wall construction
- Self-oxidizing aluminum inner liner and heavy gauge galvanized steel outer shell
- Rolled ends for increased strength
- Aluminum extension can be formed to fit oval draft hood outlets of furnaces.

Part #	Description
8DHC	Draft Hood Connector

Wall Thimble

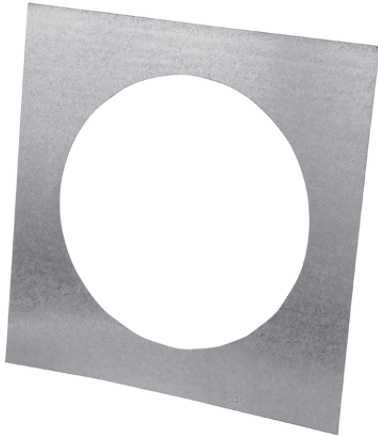


- Listed to UL 441
- Galvanized steel and aluminum construction
- Adjustable 4" to 6.5" in depth

Part #	Description
8VT	Wall Thimble



Firestop



- Listed to UL 441
- Galvanized steel construction

Part #	Description
8GF	Firestop

Interior Support Band



- Listed to UL 441
- Galvanized steel construction

Part #	Description
8ISB	Interior Support Band

Double Wall Increasers



- Listed to UL 441
- Double wall construction
- Self-oxidizing aluminum inner liner and heavy gauge galvanized steel outer shell
- Snap-Lock design for easy assembly

Part #	Description
8x10	DW Increaser, 8" to 10"
8x12	DW Increaser, 8" to 12"
8x14	DW Increaser, 8" to 14"
8x16	DW Increaser, 8" to 16"
8x18	DW Increaser, 8" to 18"
8x20	DW Increaser, 8" to 20"
8x22	DW Increaser, 8" to 22"
8x24	DW Increaser, 8" to 24"



Round Pipe

- Listed to UL 441
- Double-wall construction
- Self-oxidizing aluminum inner liner and heavy gauge galvanized steel outer shell
- Rolled ends for increased strength
- Snap-Lock design for easy assembly

Part #	Description
10G2	Round pipe, 2' Length
10G3	Round pipe, 3' Length
10G4	Round pipe, 4' Length



Fitting

- Listed to UL 441
- Double wall construction
- Adjustable length pipe for use on the male end of other manufacturer's pipe or fittings.

Part #	Description
10AR1	Adjustable Length Round Pipe 12"



Elbow

- Listed to UL 441
- Double-wall construction
- Self-oxidizing aluminum inner liner and heavy gauge galvanized steel outer shell
- Rolled ends for increased strength
- Snap-Lock design for easy assembly

Part #	Description
10-45	Round 45° Elbow
10-45A	Round 45° Elbow Adjustable



Tee & Tee Cap

- Listed to UL 441
- Double-wall construction (on tee)
- Self-oxidizing aluminum inner liner and heavy gauge galvanized steel outer shell
- Rolled ends for increased strength
- Snap-Lock design for easy assembly

Part #	Description
10RT	Round Tee
10RTC	Round Tee Cap



Termination Cap

- Listed to UL 441
- Aluminum construction

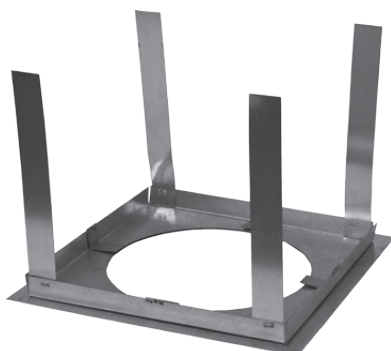
Part #	Description
10JC	JetCap



Storm Collar

- Listed to UL 441
- Galvanized steel construction

Part #	Description
10SC	Storm Collar

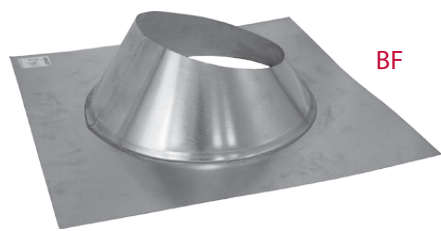


Base Assembly

- Listed to UL 441
- Galvanized steel construction

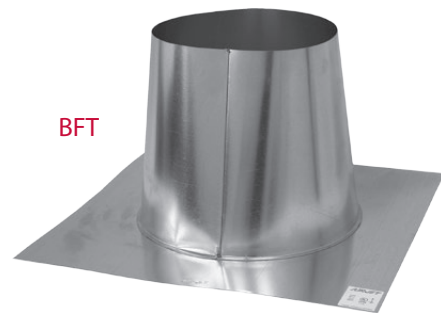
Part #	Description
10BA	Base Assembly

Flashing

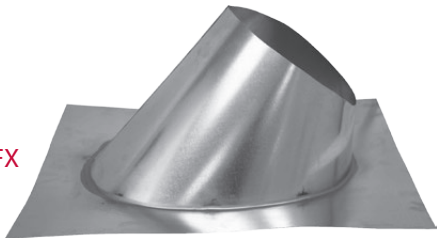


- Listed to UL 441
- Galvanized steel construction

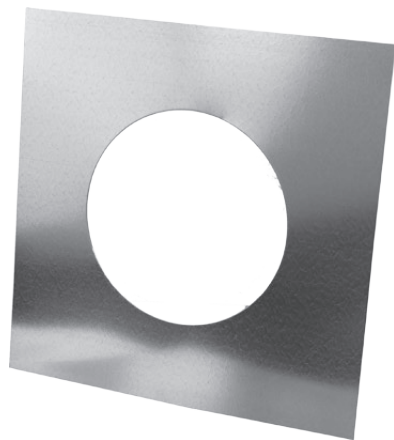
Part #	Description
10BF	Adjustable Boot Flashing, 0/12–6/12
10BFT	Tall Cone Flashing
10BFX	7/12–12/12 Flashing



BFX



Firestop



- Listed to UL 441
- Galvanized steel construction

Part #	Description
10GF	Firestop

Interior Support Band



- Listed to UL 441
- Galvanized steel construction

Part #	Description
10ISB	Interior Support Band

Double Wall Increaseers



- Listed to UL 441
- Double wall construction
- Self-oxidizing aluminum inner liner and heavy gauge galvanized steel outer shell
- Snap-Lock design for easy assembly

Part #	Description
10x12	DW increaser, 10" to 12"
10x14	DW increaser, 10" to 14"
10x16	DW increaser, 10" to 16"
10x18	DW increaser, 10" to 18"
10x20	DW increaser, 10" to 20"
10x22	DW increaser, 10" to 22"
10x24	DW increaser, 10" to 24"
10x30	DW increaser, 10" to 30"

Round Pipe



- Listed to UL 441
- Double-wall construction
- Self-oxidizing aluminum inner liner and heavy gauge galvanized steel outer shell
- Rolled ends for increased strength
- Snap-Lock design for easy assembly

Part #	Description
12G2	Round pipe, 2' Length
12G3	Round pipe, 3' Length

Fitting



- Listed to UL 441
- Double wall construction
- Adjustable length pipe for use on the male end of other manufacturer's pipe or fittings.

Part #	Description
12AR1	Adjustable Length Round Pipe, 12"

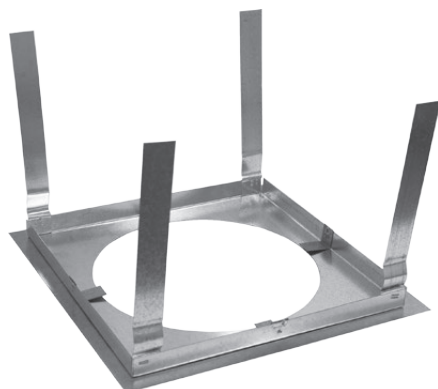
Elbow



- Listed to UL 441
- Double-wall construction
- Self-oxidizing aluminum inner liner and heavy gauge galvanized steel outer shell
- Rolled ends for increased strength
- Snap-Lock design for easy assembly

Part #	Description
12-45	Round 45° Elbow
12-45A	Round 45° Adjustable

Base Assembly



- Listed to UL 441
- Galvanized steel construction

Part #	Description
12BA	Base Assembly



Tee & Tee Cap

- Listed to UL 441
- Double-wall construction (on tee)
- Self-oxidizing aluminum inner liner and heavy gauge galvanized steel outer shell
- Rolled ends for increased strength
- Snap-Lock design for easy assembly

Part #	Description
12RT	Round Tee
12RTC	Round Tee Cap



Termination Cap

- Listed to UL 441
- Aluminum construction

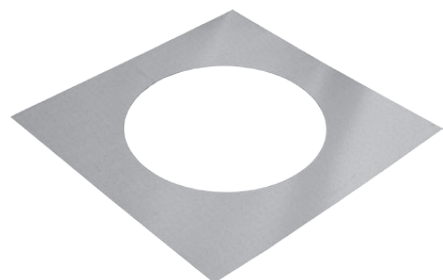
Part #	Description
12JC	JetCap



Storm Collar

- Listed to UL 441
- Galvanized steel construction

Part #	Description
12SC	Storm Collar



Firestop

- Listed to UL 441
- Galvanized steel construction

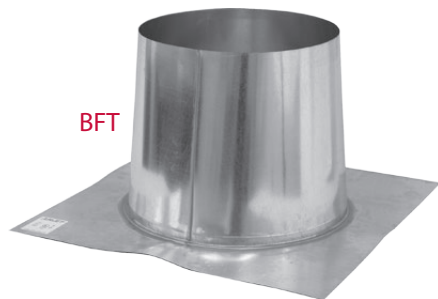
Part #	Description
12GF	Firestop

Flashing

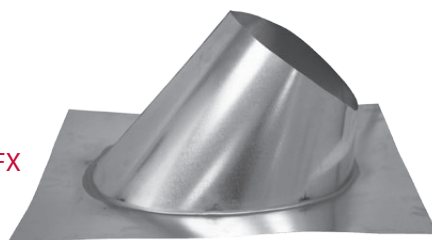
BF



BFT



BFX



- Listed to UL 441
- Galvanized steel construction

Part #	Description
12BF	Adjustable Boot Flashing, 0/12-6/12
12BFT	Tall Cone Flashing
12BFX	7/12-12/12 Flashing

Double Wall Increaseers



- Listed to UL 441
- Double wall construction
- Self-oxidizing aluminum inner liner and heavy gauge galvanized steel outer shell
- Snap-Lock design for easy assembly

Part #	Description
12x14	DW Increaseer, 12" to 14"
12x16	DW Increaseer, 12" to 16"
12x18	DW Increaseer, 12" to 18"
12x20	DW Increaseer, 12" to 20"
12x22	DW Increaseer, 12" to 22"
12x24	DW Increaseer, 12" to 24"
12x26	DW Increaseer, 12" to 26"



Round Pipe

- Listed to UL 441
- Double-wall construction
- Self-oxidizing aluminum inner liner and heavy gauge galvanized steel outer shell
- Rolled ends for increased strength
- Snap-Lock design for easy assembly

Part #	Description
14G2	14" Round pipe, 2' Length
14G3	14" Round pipe, 3' Length
16G2	16" Round pipe, 2' Length
16G3	16" Round pipe, 3' Length
18G2	18" Round pipe, 2' Length
18G3	18" Round pipe, 3' Length
20G2	20" Round pipe, 2' Length
20G3	20" Round pipe, 3' Length
22G2	22" Round pipe, 2' Length
22G3	22" Round pipe, 3' Length



Fitting

- Listed to UL 441
- Double wall construction
- Adjustable length pipe for use on the male end of other manufacturer's pipe or fittings.

Part #	Description
14AR11/2	14" Adjustable Length Round Pipe, 18"
16AR11/2	16" Adjustable Length Round Pipe, 18"
18AR11/2	18" Adjustable Length Round Pipe, 18"
20AR11/2	20" Adjustable Length Round Pipe, 18"
22AR11/2	22" Adjustable Length Round Pipe, 18"

Elbow



- Listed to UL 441
- Double-wall construction
- Self-oxidizing aluminum inner liner and heavy gauge galvanized steel outer shell
- Rolled ends for increased strength
- Snap-Lock design for easy assembly

Part #	Description
14-45	14" Round 45° Elbow
16-45	16" Round 45° Elbow
18-45	18" Round 45° Elbow
20-45	20" Round 45° Elbow
22-45	22" Round 45° Elbow

Tee & Tee Cap



- Listed to UL 441
- Double-wall construction (on tee)
- Self-oxidizing aluminum inner liner and heavy gauge galvanized steel outer shell
- Rolled ends for increased strength
- Snap-Lock design for easy assembly

Part #	Description
14RT	14" Round Tee
14RTC	14" Round, Tee Cap
16RT	16" Round Tee
16RTC	16" Round Tee Cap
18RT	18" Round Tee
18RTC	18" Round Tee Cap
20RT	20" Round Tee
20RTC	20" Round Tee Cap
22RT	22" Round Tee
22RTC	22" Round Tee Cap

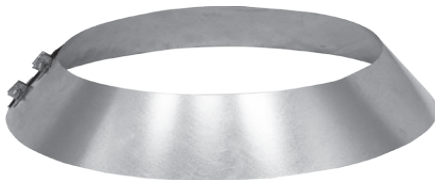
Termination Cap



- Listed to UL 441
- Aluminum construction

Part #	Description
14JC	14" JetCap-Aluminum
16JC	16" JetCap-Aluminum
18JC	18" JetCap-Aluminum
20JC	20" JetCap-Aluminum
22JC	22" JetCap-Aluminum

Storm Collar

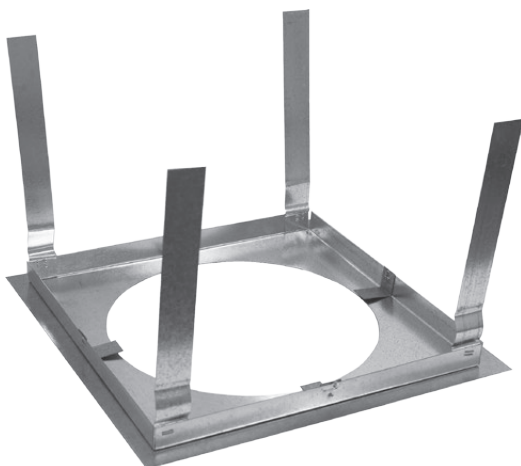


- Listed to UL 441
- Galvanized steel construction

Part #	Description
14SC	14" Storm Collar
16SC	16" Storm Collar
18SC	18" Storm Collar
20SC	20" Storm Collar
22SC	Storm Collar

Base Assembly

- Listed to UL 441
- Galvanized steel construction

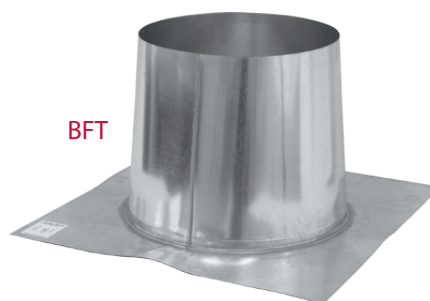
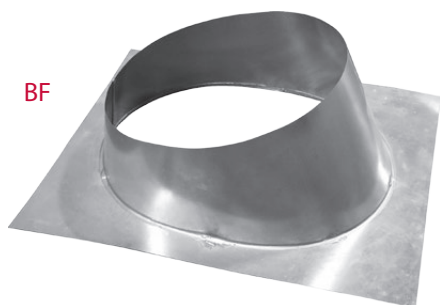


Part #	Description
14BA	14" Base Assembly
16BA	16" Base Assembly
18BA	18" Base Assembly
20BA	20" Base Assembly
22BA	22" Base Assembly

Flashing

- Listed to UL 441
- Galvanized steel construction

Part #	Description
14BF	14" Adjustable Boot Flashing, 0/12-6/12
14BFT	14" Tall Cone Flashing
14BFX	14" 7/12-12/12 Flashing
16BF	16" Adjustable Boot Flashing, 0/12-6/12
16BFT	16" Tall Cone Flashing
18BF	18" Adjustable Boot Flashing, 0/12-6/12
18BFT	18" Tall Cone Flashing
20BF	20" Adjustable Boot Flashing, 0/12-6/12
20BFT	20" Tall Cone Flashing
22BF	22" Adjustable Boot Flashing, 0/12-6/12
22BFT	22" Tall Cone Flashing



Double Wall Increaseers



- Listed to UL 441
- Double wall construction
- Self-oxidizing aluminum inner liner and heavy gauge galvanized steel outer shell
- Snap-Lock design for easy assembly



Part #	Description
14x16	DW Increaser, 14" to 16"
14x18	DW Increaser, 14" to 18"
14x20	DW Increaser, 14" to 20"
14x22	DW Increaser, 14" to 22"
14x24	DW Increaser, 14" to 24"
14x26	DW Increaser, 14" to 26"
16x18	DW Increaser, 16" to 18"
16x20	DW Increaser, 16" to 20"
16x22	DW Increaser, 16" to 22"
16x24	DW Increaser, 16" to 24"
16x30	DW Increaser, 16" to 30"
18x20	DW Increaser, 18" to 20"
18x22	DW Increaser, 18" to 22"
18x24	DW Increaser, 18" to 24"
18x32	DW Increaser, 18" to 32"
20x22	DW Increaser, 20" to 22"
20x24	DW Increaser, 20" to 24"
22x24	DW Increaser, 22" to 24"
22x26	DW Increaser, 22" to 26"
22x28	DW Increaser, 22" to 28"
22x32	DW Increaser, 22" to 32"
22x34	DW Increaser, 22" to 34"

Round Pipe



- Listed to UL 441 (24" only)
- Double-wall construction
- Self-oxidizing aluminum inner liner and heavy gauge galvanized steel outer shell
- Rolled ends for increased strength
- Snap-Lock design for easy assembly

Part #	Description
24G2	24" Round pipe, 2' Length
24G3	24" Round pipe, 3' Length
26G2	26" Round pipe, 2' Length
26G3	26" Round pipe, 3' Length
28G2	28" Round pipe, 2' Length
28G3	28" Round pipe, 3' Length
30G2	30" Round pipe, 2' Length
30G3	30" Round pipe, 3' Length
32G2	32" Round pipe, 2' Length
32G3	32" Round pipe, 3' Length
34G2	34" Round pipe, 2' Length
34G3	34" Round pipe, 3' Length
36G2	36" Round pipe, 2' Length
36G3	36" Round pipe, 3' Length

B-vent commercial products in sizes 26" diameter and larger are NOT UL Listed.

Fitting



- Listed to UL 441 (24" only)
- Double wall construction
- Adjustable length pipe for use on the male end of other manufacturer's pipe or fittings.

Part #	Description
24AR11/2	24" Adjustable Length Round Pipe, 18"
26AR11/2	26" Adjustable Length Round Pipe, 18"
28AR11/2	28" Adjustable Length Round Pipe, 18"
30AR11/2	30" Adjustable Length Round Pipe, 18"
32AR11/2	32" Adjustable Length Round Pipe, 18"
34AR11/2	34" Adjustable Length Round Pipe, 18"
36AR11/2	36" Adjustable Length Round Pipe, 18"

Elbow



- Listed to UL 441 (24" only)
- Double-wall construction
- Self-oxidizing aluminum inner liner and heavy gauge galvanized steel outer shell
- Rolled ends for increased strength
- Snap-Lock design for easy assembly

Part #	Description
24-45	24" Round 45° Elbow
26-45	26" Round 45° Elbow
28-45	28" Round 45° Elbow
30-45	30" Round 45° Elbow
32-45	32" Round 45° Elbow
34-45	34" Round 45° Elbow
36-45	36" Round 45° Elbow

Tee & Tee Cap



- Listed to UL 441 (24" only)
- Double-wall construction (on tee)
- Self-oxidizing aluminum inner liner and heavy gauge galvanized steel outer shell
- Rolled ends for increased strength
- Snap-Lock design for easy assembly

Part #	Description
24RT	24" Round Tee
24RTC	24" Round Tee Cap
26RT	26" Round Tee
26RTC	26" Round Tee Cap
28RT	28" Round Tee
28RTC	28" Round Tee Cap
30RT	30" Round Tee
30RTC	30" Round Tee Cap
32RT	32" Round Tee
32RTC	32" Round Tee Cap
34RT	34" Round Tee
34RTC	34" Round Tee Cap
36RT	36" Round Tee
36RTC	36" Tee Cap

B-vent commercial products in sizes 26" diameter and larger are NOT UL Listed.

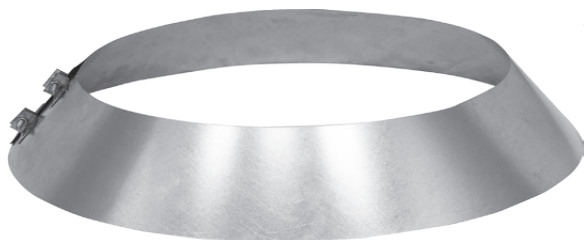
Termination Cap



- Listed to UL 441 (24" only)
- Aluminum construction

Part #	Description
24JC	24" JetCap-Aluminum
26JC	26" JetCap-Aluminum
28JC	28" JetCap-Aluminum
30JC	30" JetCap-Aluminum
32JC	32" Jet Cap-Aluminum
34JC	34" Jet Cap-Aluminum
36JC	36" Jet Cap-Aluminum

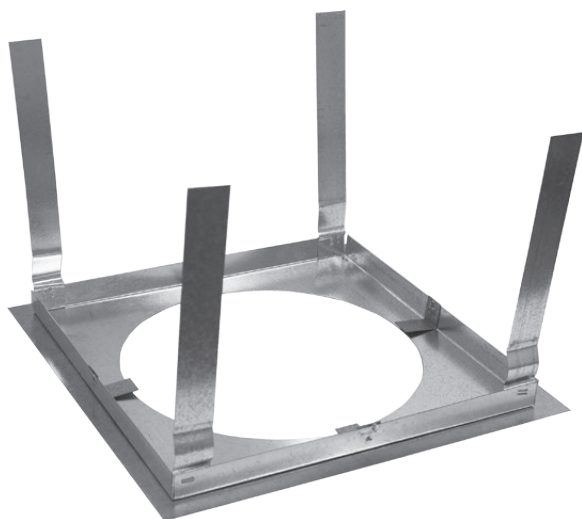
Storm Collar



- Listed to UL 441 (24" only)
- Galvanized steel construction

Part #	Description
24SC	24" Storm Collar
26SC	26" Storm Collar
28SC	28" Storm Collar
30SC	30" Storm Collar
32SC	32" Storm Collar
34SC	34" Storm Collar
36SC	36" Storm Collar

Base Assembly



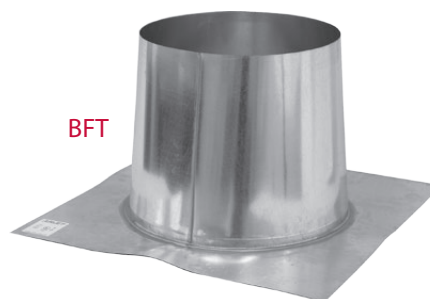
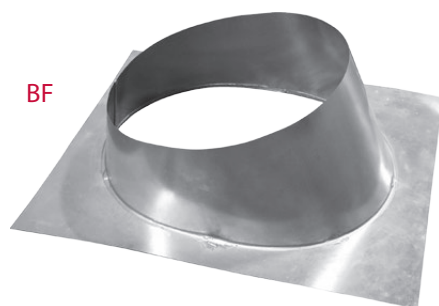
- Listed to UL 441 (24" only)
- Galvanized steel construction

Part #	Description
24BA	24" Base Assembly
26BA	26" Base Assembly
28BA	28" Base Assembly
30BA	30" Base Assembly
32BA	32" Base Assembly
34BA	34" Base Assembly
36BA	36" Base Assembly

Flashing

- Listed to UL 441 (24" only)
- Galvanized steel construction

Part #	Description
24BF	24" Adjustable Boot Flashing, 0/12-6/12
24BFT	24" Tall Cone Flashing
26BF	26" Adjustable Boot Flashing, 0/12-6/12
26BFT	26" Tall Cone Flashing
28BF	28" Adjustable Boot Flashing, 0/12-6/12
28BFT	28" Tall Cone Flashing
30BF	30" Adjustable Boot Flashing, 0/12-6/12
30BFT	30" Tall Cone Flashing
32BF	32" Adjustable Boot Flashing, 0/12-6/12
32BFT	32" Tall Cone Flashing
34BF	34" Adjustable Boot Flashing, 0/12-6/12
34BFT	34" Tall Cone Flashing
36BF	36" Adjustable Boot Flashing, 0/12-6/12
36BFT	36" Tall Cone Flashing



Double Wall Increaseers



- Listed to UL 441 (24" only)
- Double wall construction
- Self-oxidizing aluminum inner liner and heavy gauge galvanized steel outer shell
- Snap-Lock design for easy assembly

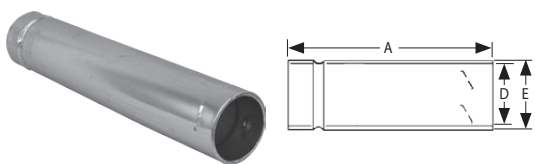
Part #	Description
24x26	DW Increaser, 24" to 26"
24x30	DW Increaser, 24" to 30"
26x30	DW Increaser, 26" to 30"
26x32	DW Increaser, 26" to 32"



B-vent commercial products in sizes 26" diameter and larger are NOT UL Listed.

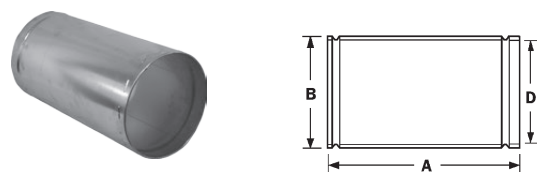
B-vent Dimensions

Round Pipe (3" - 12")



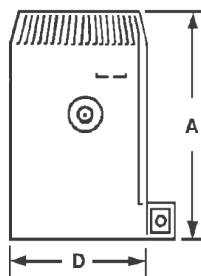
- A Stated Length
- D Stated Diameter
- E Stated Diameter + 3/4"

Round Pipe (14" - 36")



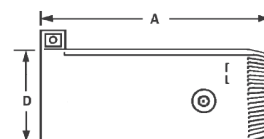
- A Stated Length (24" or 36")
- D Stated Diameter
- E Stated Diameter + 1"

Adjustable Pipe (AR1/2)



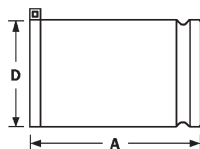
	A	D
3AR $\frac{1}{2}$	6"	3"
4AR $\frac{1}{2}$	6"	4"
5AR $\frac{1}{2}$	6"	5"
6AR $\frac{1}{2}$	6"	6"
7AR $\frac{1}{2}$	6"	7"
8AR $\frac{1}{2}$	6"	8"

Adjustable Pipe (AR1) (3" - 12")



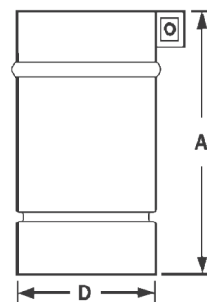
	A	D
3AR1	12"	3"
4AR1	12"	4"
5AR1	12"	5"
6AR1	12"	6"
7AR1	12"	7"
8AR1	12"	8"
10AR1	12"	10"
12AR1	12"	12"

Adjustable Pipe (AR1-1/2) (14" - 36")



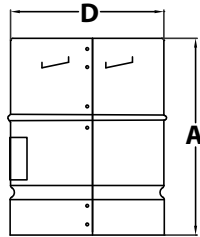
- A 18"
- D Stated Diameter

Female Universal Adapter



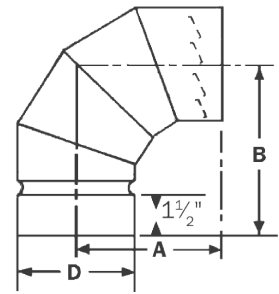
	A	D
3FUA	8"	3 $\frac{3}{4}$ "
4FUA	8"	4 $\frac{3}{4}$ "
5FUA	8"	5 $\frac{3}{4}$ "
6FUA	8"	6 $\frac{3}{4}$ "
7FUA	8"	7 $\frac{3}{4}$ "
8FUA	8"	8 $\frac{3}{4}$ "

Swivel Fitting



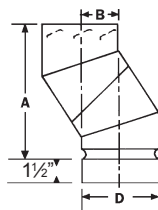
	A	D
3GSW	6 $\frac{7}{8}$ "	3 $\frac{5}{8}$ "
4GSW	7"	4 $\frac{5}{8}$ "
5GSW	7 $\frac{15}{16}$ "	5 $\frac{3}{8}$ "
6GSW	7 $\frac{15}{16}$ "	6 $\frac{3}{8}$ "

90° Elbow



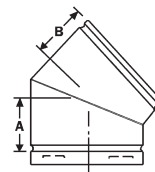
	A	B	D
3-90	5 $\frac{5}{16}$ "	5 $\frac{7}{16}$ "	3 $\frac{3}{4}$ "
4-90	6 $\frac{25}{32}$ "	6 $\frac{21}{32}$ "	4 $\frac{3}{4}$ "
5-90	6 $\frac{3}{4}$ "	6 $\frac{5}{16}$ "	5 $\frac{3}{4}$ "
6-90	7"	6 $\frac{1}{8}$ "	6 $\frac{3}{4}$ "
7-90	7 $\frac{9}{16}$ "	6 $\frac{3}{4}$ "	7 $\frac{3}{4}$ "
8-90	8 $\frac{3}{8}$ "	7 $\frac{9}{16}$ "	8 $\frac{3}{4}$ "

90° Elbow as Offset



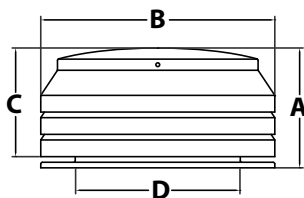
	A	B	D
3-90	8 $\frac{11}{16}$ "	2 $\frac{1}{16}$ "	3 $\frac{3}{4}$ "
4-90	9 $\frac{1}{8}$ "	2 $\frac{15}{16}$ "	4 $\frac{3}{4}$ "
5-90	12"	2 $\frac{11}{16}$ "	5 $\frac{3}{4}$ "
6-90	10 $\frac{1}{4}$ "	2 $\frac{27}{32}$ "	6 $\frac{3}{4}$ "
7-90	11 $\frac{13}{16}$ "	3 $\frac{1}{8}$ "	7 $\frac{3}{4}$ "
8-90	12 $\frac{5}{16}$ "	3 $\frac{5}{8}$ "	8 $\frac{3}{4}$ "

45° Elbow



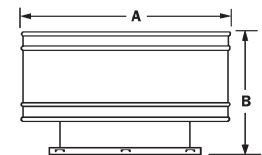
ITEM	A	B
14-45	5"	6"
16-45	5 $\frac{1}{2}$ "	6 $\frac{3}{8}$ "
18-45	6"	6 $\frac{3}{4}$ "
20-45	7 $\frac{3}{8}$ "	6 $\frac{3}{8}$ "
22-45	7 $\frac{3}{8}$ "	6 $\frac{3}{4}$ "
24-45	8 $\frac{1}{4}$ "	7"

Termination Cap 3" - 12"



	A	B	C	D
3JC	6"	6 $\frac{1}{2}$ "	4 $\frac{7}{8}$ "	3 $\frac{11}{16}$ "
4JC	6"	6 $\frac{1}{2}$ "	4 $\frac{7}{8}$ "	4 $\frac{11}{16}$ "
5JC	5 $\frac{7}{8}$ "	10 $\frac{1}{2}$ "	4 $\frac{7}{8}$ "	5 $\frac{11}{16}$ "
6JC	7 $\frac{7}{8}$ "	10 $\frac{1}{2}$ "	6 $\frac{7}{8}$ "	6 $\frac{11}{16}$ "
7JC	7 $\frac{7}{8}$ "	10 $\frac{1}{2}$ "	6 $\frac{7}{8}$ "	7 $\frac{11}{16}$ "
8JC	9 $\frac{7}{8}$ "	10 $\frac{1}{2}$ "	8 $\frac{7}{8}$ "	8 $\frac{11}{16}$ "
10JC	9 $\frac{1}{8}$ "	15"	8 $\frac{5}{8}$ "	10 $\frac{3}{4}$ "
12JC	13 $\frac{5}{8}$ "	15"	12 $\frac{1}{2}$ "	12 $\frac{3}{4}$ "

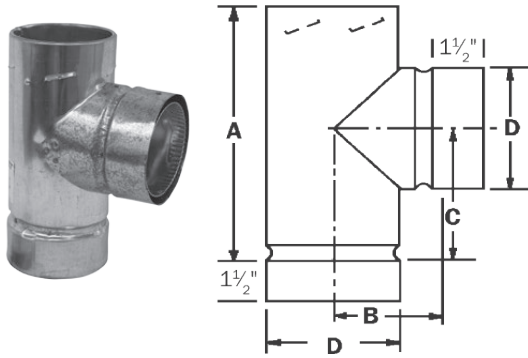
Termination Cap (14" - 24")



	A	B
14JC	28"	20 $\frac{1}{4}$ "
16JC	32"	23"
18JC	36"	25 $\frac{3}{4}$ "
20JC	40"	28 $\frac{3}{8}$ "
22JC	44"	31 $\frac{1}{16}$ "
24JC	48"	48 $\frac{3}{4}$ "

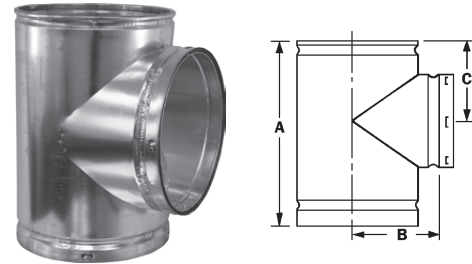
B-vent Dimensions

Tee (4" - 12")



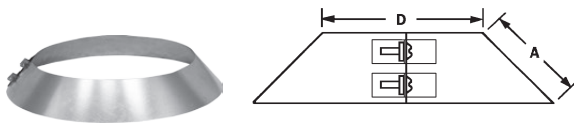
	A	B	C	D
4RT	9"	3 3/4"	4 11/16"	4 3/4"
5RT	10 1/16"	4 1/16"	5 1/8"	5 3/4"
6RT	11"	4 3/4"	5 5/8"	6 3/4"
7RT	12"	5 1/8"	6 3/8"	7 3/4"
8RT	13 1/16"	5 13/16"	6 13/16"	8 3/4"
10RT	14"	6 1/4"	6 7/16"	10 3/4"
12RT	17 3/16"	8 5/16"	8 1/8"	12 3/4"

Tee (14" - 24")



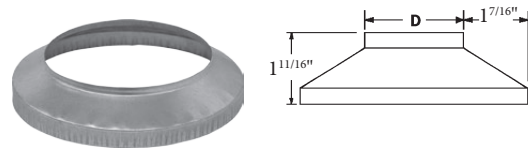
	A	B	C
14RT	24"	9 1/2"	9"
16RT	24"	10 1/2"	10"
18RT	27"	11 1/2"	11"
20RT	36"	12 1/2"	13"
22RT	36"	13 1/2"	14"
24RT	36"	14 1/2"	15"

Storm Collar (14" - 24")



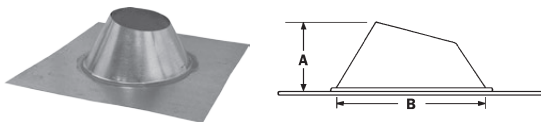
	A	D
14SC	4"	15"
16SC	4 1/2"	17"
18SC	5"	19"
20SC	6"	21"
22SC	7"	23"
24SC	8"	25"

Storm Collar (3" - 12")



	D
3SC	3 3/4"
4SC	4 3/4"
5SC	5 3/4"
6SC	6 3/4"
7SC	7 3/4"
8SC	8 3/4"
10SC	10 3/4"
12SC	12 3/4"

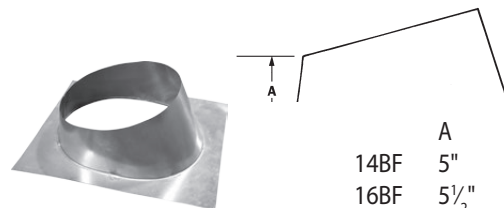
Adjustable Boot Flashing (3" - 12")



	A	B
3BF	5 1/2"	8 3/16"
4BF	4 1/2"	8 3/16"
5BF	5 1/2"	10 11/16"
6BF	5 3/16"	10 11/16"
7BF	7 1/4"	13 11/16"
8BF	6 1/8"	13 11/16"
10BF	8 1/2"	16 7/4"
12BF	8 3/8"	16 7/4"

Note: Flashing adjusts from flat to 6/12 pitch.

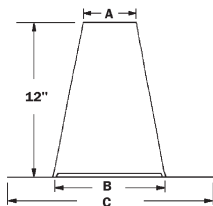
Adjustable Boot Flashing (14" - 36")



Note: Boot flashing adjusts from flat to 5/12 pitch.

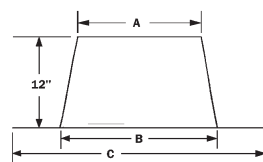
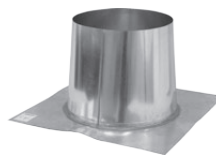
	A
14BF	5"
16BF	5 1/2"
18BF	6"
20BF	6 1/2"
22BF	7"
24BF	7 1/2"
26BF	8"
28BF	8 1/2"
30BF	9"
32BF	9 1/2"
34BF	10"
36BF	10 1/2"

Tall Cone Flashing (3" - 12")



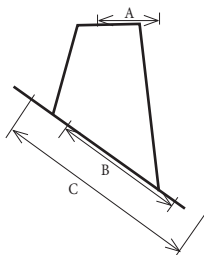
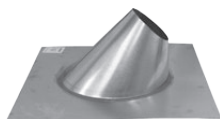
	A	B	C
3BFT	3 $\frac{7}{8}$ "	8 $\frac{13}{16}$ "	15 $\frac{5}{32}$ "
4BFT	4 $\frac{7}{8}$ "	8 $\frac{13}{16}$ "	15 $\frac{5}{32}$ "
5BFT	5 $\frac{7}{8}$ "	8 $\frac{13}{16}$ "	15 $\frac{5}{32}$ "
6BFT	6 $\frac{7}{8}$ "	10 $\frac{11}{16}$ "	18 $\frac{5}{16}$ "
7BFT	7 $\frac{7}{8}$ "	10 $\frac{11}{16}$ "	18 $\frac{5}{16}$ "
8BFT	8 $\frac{7}{8}$ "	10 $\frac{11}{16}$ "	18 $\frac{5}{16}$ "
10BFT	10 $\frac{7}{8}$ "	13 $\frac{11}{16}$ "	21 $\frac{7}{16}$ "
12BFT	12 $\frac{7}{8}$ "	14 $\frac{5}{8}$ "	24 $\frac{19}{32}$ "

Tall Cone Flashing (14" - 36")



	A	B	C
14BFT	15 $\frac{1}{2}$ "	16 $\frac{1}{4}$ "	24 $\frac{19}{32}$ "
16BFT	17 $\frac{1}{2}$ "	18 $\frac{3}{4}$ "	26 $\frac{5}{16}$ "
18BFT	19 $\frac{1}{2}$ "	20 $\frac{3}{4}$ "	28 $\frac{3}{4}$ "
20BFT	21 $\frac{1}{2}$ "	22 $\frac{3}{4}$ "	30 $\frac{3}{4}$ "
22BFT	23 $\frac{1}{2}$ "	24 $\frac{3}{4}$ "	32 $\frac{3}{4}$ "
24BFT	25 $\frac{1}{2}$ "	26"	34"
26BFT	27 $\frac{1}{2}$ "	28 $\frac{1}{4}$ "	36 $\frac{19}{32}$ "
28BFT	29 $\frac{1}{2}$ "	30 $\frac{3}{4}$ "	38 $\frac{5}{16}$ "
30BFT	31 $\frac{1}{2}$ "	32 $\frac{3}{4}$ "	40 $\frac{3}{4}$ "
32BFT	33 $\frac{1}{2}$ "	34 $\frac{3}{4}$ "	42 $\frac{3}{4}$ "
34BFT	35 $\frac{1}{2}$ "	36 $\frac{3}{4}$ "	44 $\frac{3}{4}$ "
36BFT	37 $\frac{1}{2}$ "	38"	46"

Steep Pitch Flashing (3" - 12")



	A	B	C
3BFX	3"	10 $\frac{11}{16}$ "	23 $\frac{1}{2}$ "
4BFX	4"	10 $\frac{11}{16}$ "	23 $\frac{1}{2}$ "
5BFX	5"	13 $\frac{11}{16}$ "	23 $\frac{1}{2}$ "
6BFX	6"	13 $\frac{11}{16}$ "	23 $\frac{1}{2}$ "
7BFX	7"	13 $\frac{11}{16}$ "	23 $\frac{1}{2}$ "
8BFX	8"	16 $\frac{1}{4}$ "	23 $\frac{1}{2}$ "
10BFX	10"	20"	28"
12BFX	12"	20"	28"

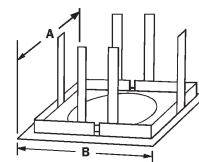
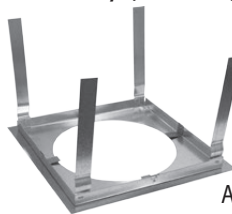
Note:

BFX 7/12-12/12,

BFY 13/12-18/12

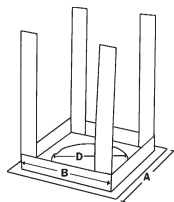
BFZ 19/12-24/12

Base Assembly (14" - 36")



	A	B
14BA	17"	19"
16BA	19"	21"
18BA	21"	23"
20BA	23"	25"
22BA	25"	27"
24BA	27"	29"
26BA	29"	31"
28BA	31"	33"
30BA	33"	35"
32BA	35"	37"
34BA	37"	39"
36BA	39"	41"

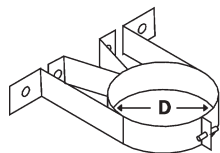
Base Assembly (3" - 12")



	A	B	D
3BA	10 $\frac{1}{2}$ "	5 $\frac{5}{8}$ "	3 $\frac{3}{4}$ "
4BA	10 $\frac{1}{2}$ "	6 $\frac{5}{8}$ "	4 $\frac{3}{4}$ "
5BA	10 $\frac{1}{2}$ "	7 $\frac{5}{8}$ "	5 $\frac{3}{4}$ "
6BA	10 $\frac{1}{2}$ "	8 $\frac{5}{8}$ "	6 $\frac{3}{4}$ "
7BA	11 $\frac{1}{4}$ "	9 $\frac{5}{8}$ "	7 $\frac{3}{4}$ "
8BA	12 $\frac{1}{4}$ "	10 $\frac{5}{8}$ "	8 $\frac{3}{4}$ "
10BA	15 $\frac{1}{4}$ "	13 $\frac{5}{8}$ "	10 $\frac{3}{4}$ "
12BA	17 $\frac{1}{4}$ "	15 $\frac{5}{8}$ "	12 $\frac{3}{4}$ "

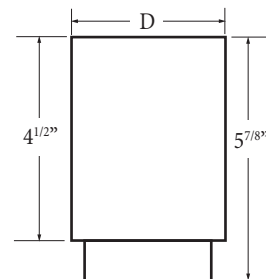
B-vent Dimensions

Interior Support Band



	D
3ISB	3 $\frac{5}{8}$ "
4ISB	4 $\frac{5}{8}$ "
5ISB	5 $\frac{5}{8}$ "
6ISB	6 $\frac{5}{8}$ "
7ISB	7 $\frac{5}{8}$ "
8ISB	8 $\frac{5}{8}$ "

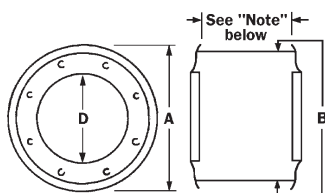
Draft Hood Connector



	D
3DHC	3 $\frac{5}{8}$ "
4DHC	4 $\frac{5}{8}$ "
5DHC	5 $\frac{5}{8}$ "
6DHC	6 $\frac{5}{8}$ "
7DHC	7 $\frac{5}{8}$ "
8DHC	8 $\frac{5}{8}$ "

Note: Aluminum extension can be formed to fit oval draft hood outlets of furnaces.

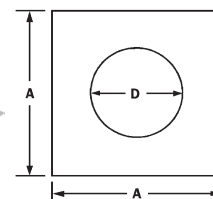
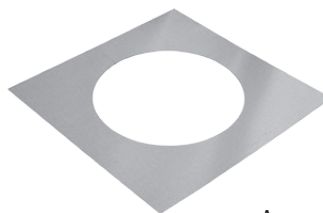
Wall Thimble



	D	A	B
3VT	3 $\frac{3}{4}$ "	6 $\frac{3}{4}$ "	5 $\frac{7}{8}$ "
4VT	4 $\frac{3}{4}$ "	9 $\frac{3}{8}$ "	8 $\frac{1}{2}$ "
5VT	5 $\frac{3}{4}$ "	9 $\frac{3}{8}$ "	8 $\frac{1}{2}$ "
6VT	6 $\frac{3}{4}$ "	10 $\frac{3}{4}$ "	9 $\frac{1}{2}$ "
7VT	7 $\frac{3}{4}$ "	12 $\frac{1}{2}$ "	11 $\frac{1}{2}$ "
8VT	8 $\frac{3}{4}$ "	12 $\frac{1}{2}$ "	11 $\frac{1}{2}$ "

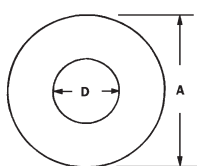
Note:
Adjustable –
4" minimum,
6 $\frac{1}{2}$ " maximum.

Firestop



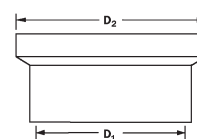
	A	D
3GF	12 $\frac{1}{2}$ "	3 $\frac{3}{4}$ "
4GF	12 $\frac{1}{2}$ "	3 $\frac{3}{4}$ "
5GF	12 $\frac{1}{2}$ "	3 $\frac{3}{4}$ "
6GF	12 $\frac{1}{2}$ "	3 $\frac{3}{4}$ "
7GF	12 $\frac{1}{2}$ "	3 $\frac{3}{4}$ "
8GF	19 $\frac{1}{4}$ "	3 $\frac{3}{4}$ "
10GF	19 $\frac{1}{4}$ "	3 $\frac{3}{4}$ "
12GF	19 $\frac{1}{4}$ "	3 $\frac{3}{4}$ "

Pipe Collar



	A	D
3PC	9 $\frac{7}{8}$ "	3 $\frac{3}{4}$ "
4PC	9 $\frac{7}{8}$ "	4 $\frac{3}{4}$ "
5PC	9 $\frac{7}{8}$ "	5 $\frac{3}{4}$ "
6PC	9 $\frac{7}{8}$ "	6 $\frac{3}{4}$ "
7PC	10 $\frac{13}{16}$ "	7 $\frac{3}{4}$ "

Double-Wall Increaser



D1 First Stated Diameter
D2 Second Stated Diameter
Length = 1 $\frac{3}{4}$ " plus additional $\frac{1}{4}$ " for each size difference between D1 and D2.

Introduction

AirJet's snap-lock design is deceptively simple. It is so easy to use in fact, that many first time installers attempt to over-complicate it. Assembly, disassembly and troubleshooting instructions for AirJet pipe are provided below.

Assembly—for shorter pieces

1. Place one piece on the floor with the male end up. (See Illustration 1.)
2. With the second piece in hand, ALIGN THE SEAMS.
3. Apply force straight down until you hear the snap (click) that denotes lock engagement.

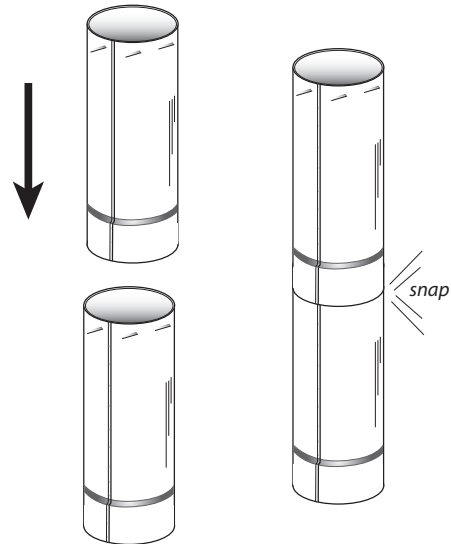


Illustration 1

See also a helpful video at:

<https://youtu.be/jMBxYMfZrJ4>

Assembly—for longer pieces

1. Place one piece along the floor, seam facing up, and the female end against a vertical surface such as wall for leverage. (Protect wall as needed.)
2. With the second piece in hand, ALIGN THE SEAMS. (See Illustration 2.)
3. Apply force straight in until you hear the snap (click) that denotes lock engagement.

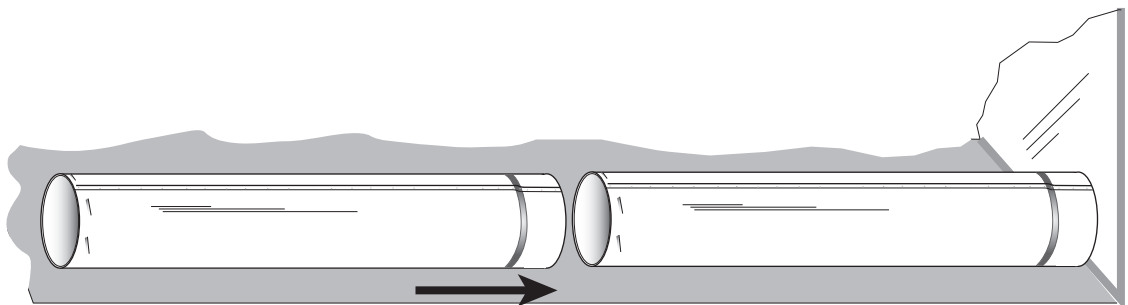


Illustration 2

Using the AirJet Snap-Lock System

Disassembly—for shorter pieces

1. Place the adjoined section on the floor.
2. Use your feet to firmly hold the bottom piece.
3. Pull straight up on the top piece to fully engage the snap locks. (Piece will stop, not allowing you to pull up further.) (See Illustration 3.)

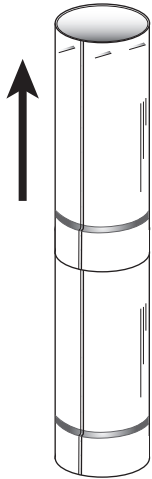


Illustration 3

4. In a continuous motion, turn the top piece counterclockwise while pulling up. (See Illustration 4.)

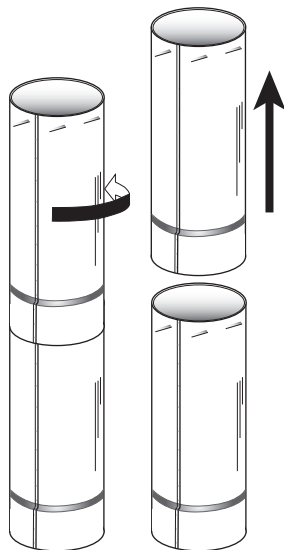


Illustration 4

Disassembly—for longer pieces

1. Obtain the help of an assistant.
2. Have assistant hold one piece firmly.
3. Pull straight out on the other piece to fully engage the snap locks.
4. On the other piece, twist counterclockwise while pulling out.

Troubleshooting

If the product does not assemble as easily as depicted here, it has likely come out of round or become otherwise damaged in shipment.

Inspect both the male and female ends of each section you are trying to connect.

The male end should be smooth and round. An oblong shape denotes that it has been crushed in transit. For minor damage you may be able to apply force in the right locations to correct. Otherwise, report the damage to the shipping company.

The rolled edge, a common feature of all AirJet pipe, should have a consistent diameter. A rare manufacturing defect can account for an uneven rolled edge.

On the female end, look for the same oblong shape problem. Also, check the inner wall, where applicable. It may have become pushed up against the outer wall or have other damage such as a bent seam.

See also a helpful video at:

<https://youtu.be/jMBxYMfZrJ4>

Warranty & Limitations

Continental Industries warrants its products in the following manner:

For gas vent, all-fuel and related venting and chimney systems, Continental warrants to the original purchaser that, for a period of 18 months from the date of shipment, these products shall be free from defects in material and workmanship under normal service and use for which they were designed.

The sole obligation under these warranties is limited to one of the following, at the sole discretion of Continental Industries:

- Delivering to the purchaser a replacement product or part
- Repairing the product or part
- Refunding an equitable portion of the purchase price paid for the product by the purchaser

Continental Industries makes no warranty of fitness for a particular purpose or merchantability of these products. Continental Industries makes no other warranty, expressed or arising by operation of law, course of dealing, usage of trade, or otherwise implied.

Continental Industries assumes no responsibility for any phase of the installation of its products, or for improper operation due to faulty installation, or for the cost of removal and replacement. Further, Continental Industries shall not be liable for any costs (including costs of removal and replacement), lost profit, loss of goodwill, or any other general, special, incidental, or consequential damages incurred in connection with the purchase of Continental Industries products.



AirJet proudly manufactures in the U.S.A.

AIRJET

a business unit of Continental Industries, Inc.

100 West Windsor Avenue • Elkhart, Indiana 46514

Toll Free Ordering: 800.735.5272

Direct: 574.262.4511

Fax: 574.262.2075

www.continentalindustries.com • info@continentalindustries.com

