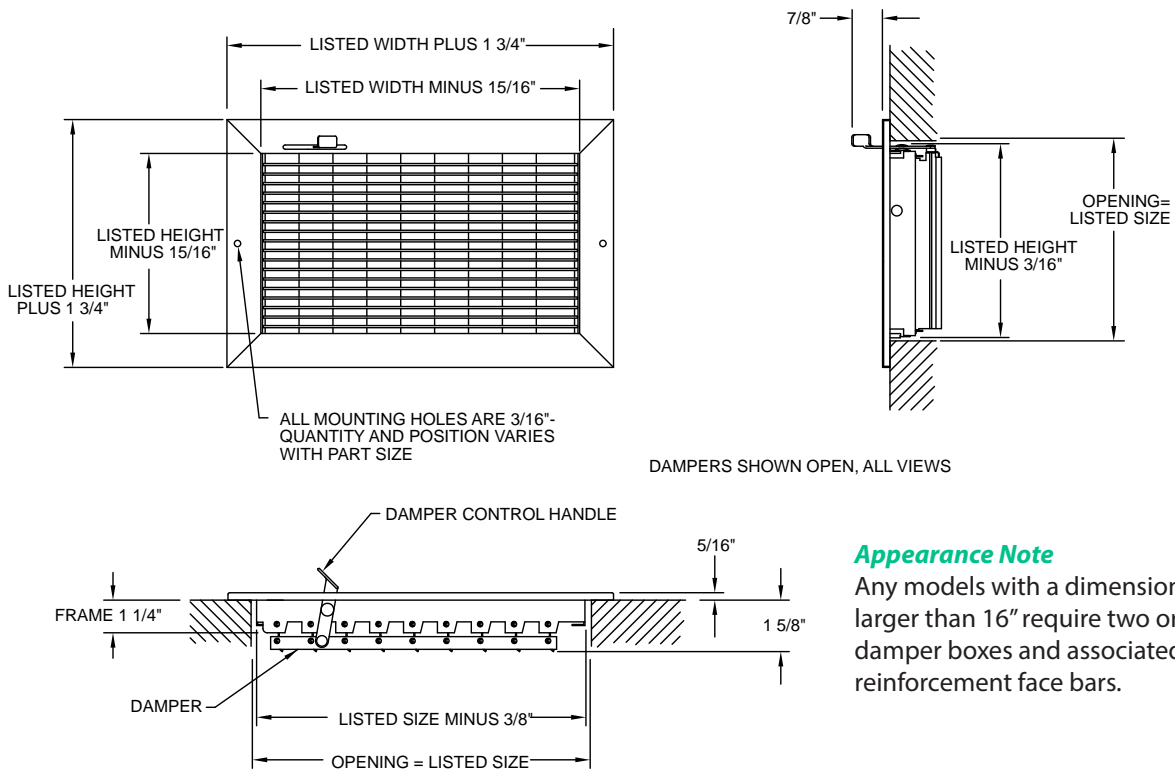


Series AHM Sidewall/Ceiling Supply Diffuser

- Adjustable, horizontal, roll-form face bars
- 3/4" bar spacing for easy adjustment
- Single deflection
- Multi-shutter damper
- Aluminum construction
- White finish
- Made in the U.S.A.



Dimensional Drawings



Appearance Note

Any models with a dimension larger than 16" require two or more damper boxes and associated reinforcement face bars.

Performance Data, Series AHM

Unit Size (in.)	Overall Size (in.)	Face Velocity	300	400	500	600	700	800	900	1000
			Pressure Loss	.006	.010	.016	.022	.031	.040	.050
8 x 4 Ak .118	9-3/4 x 5-3/4	Cfm	38	50	63	75	88	100	113	125
		Throw	4	5	7	8	9	11	12	13
8 x 6 Ak .188	9-3/4 x 7-3/4	Cfm	58	78	97	117	136	156	175	194
		Throw	5	7	8	10	12	14	15	17
10 x 4 Ak .146	11-3/4 x 5-3/4	Cfm	48	64	80	96	112	128	144	160
		Throw	5	6	8	9	11	12	13	14
10 x 6 Ak .236	11-3/4 x 7-3/4	Cfm	73	97	122	146	170	194	219	243
		Throw	6	8	9	11	13	15	17	19

NC ≤30 NC 35

Performance Data, Series AHM (continued)

Unit Size (in.)	Overall Size (in.)	Face Velocity	300	400	500	600	700	800	900	1000
		Pressure Loss	.006	.010	.016	.022	.031	.040	.050	.062
10 x 8 Ak .326	11-3/4 x 9-3/4	Cfm	100	133	167	200	233	267	300	333
		Throw	7	8	10	12	14	16	17	21
12 x 4 Ak .181	12-3/4 x 5-3/4	Cfm	58	78	97	117	136	156	175	194
		Throw	5	7	8	10	12	14	15	17
12 x 6 Ak .285	13-3/4 x 7-3/4	Cfm	90	119	149	179	209	239	269	299
		Throw	7	8	10	12	15	17	19	21
12 x 8 Ak .389	13-3/4 x 9-3/4	Cfm	121	161	201	242	282	322	363	403
		Throw	7	9	11	13	18	17	19	22
14 x 4 Ak .208	15-3/4 x 5-3/4	Cfm	69	92	115	138	160	183	206	229
		Throw	5	7	9	11	13	15	17	18
14 x 6 Ak .313	15-3/4 x 7-3/4	Cfm	104	139	174	208	243	278	313	347
		Throw	7	8	11	13	16	18	20	23
14 x 8 Ak .458	15-3/4 x 9-3/4	Cfm	142	189	236	283	331	378	425	472
		Throw	8	9	12	14	17	19	21	24

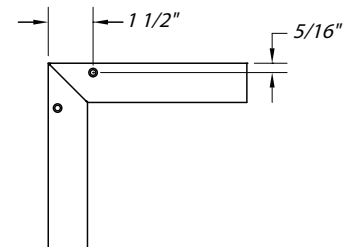
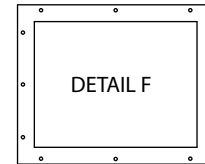
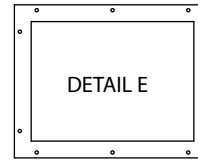
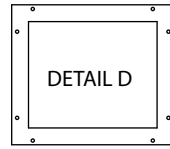
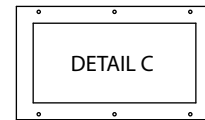
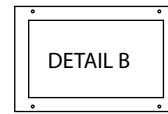
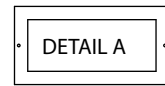
Terminal Velocity of 75 fpm

NC ≤30
 NC 35

Mounting Hole Guide for Select Products

The following products in this section have embossed (recessed) mounting holes.

Series	Page #
RVML & AVM	122, 127
RHML & AHM	129, 131
RGV & ARGV	133
RGV-0 & ARVG-0	135
RGH & ARGH	137
RGH-0 & ARGH-0	139
HVG & AHVG	141
VHG & AVHG	143
FBG40 & AFBG40	145
FBG60 & AFBG60	147



The following chart and diagrams above apply to these products.

		Width																									
		6	8	10	12	14	15	16	18	20	22	24	26	28	30	32	34	36	38	40	42	44	46	48			
Height	4																									4	
	6																										6
	8				A							B															8
	10			2 Holes								4 Holes									C						10
	12																					6 Holes					12
	14																										14
	15																										15
	16																										16
	18																										18
	20																										20
	22				B								D									E					22
	24			4 Holes									8 Holes									10 Holes					24
	26																										26
	28																										28
	30																										30
	32																										32
34																										34	
36																										36	
38				C								E									F					38	
40			6 Holes									10 Holes									12 Holes					40	
42																										42	
44																										44	
46																										46	
48																										48	
		6	8	10	12	14	15	16	18	20	22	24	26	28	30	32	34	36	38	40	42	44	46	48			
		Width																									

Commercial Sidewall or Ceiling