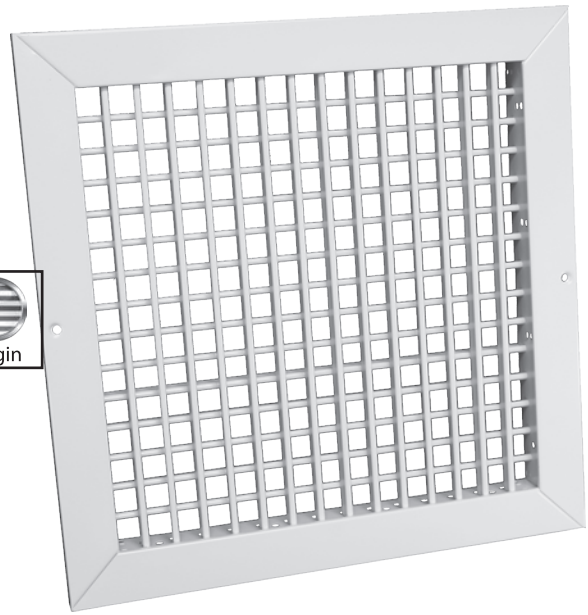
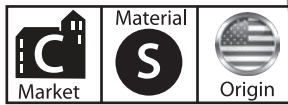
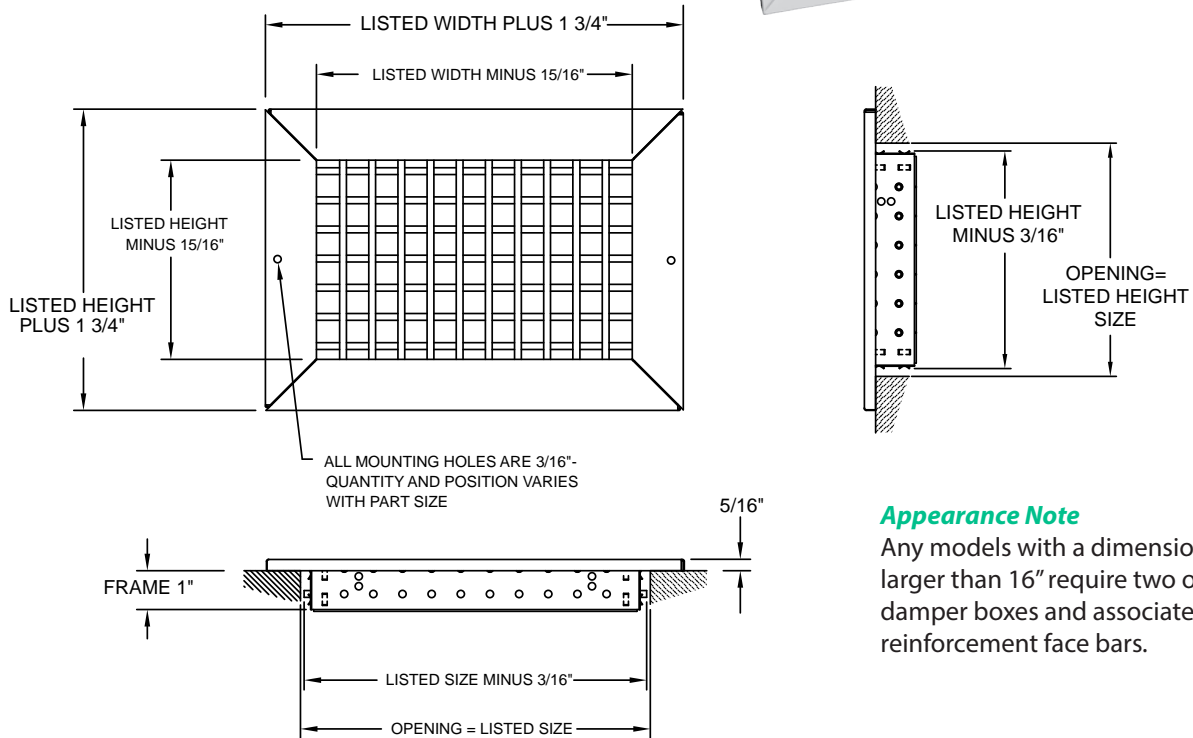


Series VHG/AVHG Sidewall/Ceiling Supply Grille

- Double deflection
- Adjustable, vertical, roll-form face bars
- Adjustable, horizontal, roll-form rear bars
- 3/4" bar spacing for easy adjustment
- Steel construction (VHG)
- Aluminum construction (AVHG)
- White finish
- Made in the U.S.A.



Dimensional Drawings



Appearance Note

Any models with a dimension larger than 16" require two or more damper boxes and associated reinforcement face bars.

Performance Data, Series VHG/AVHG

Unit Size (in.)	Overall Size (in.)	Face Velocity	300	400	500	600	700	800	900	1000
			Pressure Loss	.006	.010	.016	.022	.031	.040	.050
6 x 6 Ak .167	7-3/4 x 7-3/4	Cfm	50	67	83	100	117	133	150	167
		Throw	5	6	7	9	10	12	13	15
8 x 8 Ak .320	9-3/4 x 9-3/4	Cfm	96	128	160	192	224	256	288	319
		Throw	6	7	9	11	13	15	17	19
10 x 6 Ak .297	11-3/4 x 7-3/4	Cfm	90	119	149	179	209	239	269	299
		Throw	6	8	9	11	13	15	17	19
10 x 8 Ak .410	11-3/4 x 9-3/4	Cfm	123	164	205	246	287	328	369	410
		Throw	7	8	10	12	14	16	17	21
10 x 10 Ak .521	11-3/4 x 11-3/4	Cfm	156	208	260	313	365	417	469	521
		Throw	7	9	12	14	16	18	20	23

Performance Data, Series VHG/AVHG (continued)

Unit Size (in.)	Overall Size (in.)	Face Velocity	300	400	500	600	700	800	900	1000
		Pressure Loss	.006	.010	.016	.022	.031	.040	.050	.062
12 x 6 Ak .361	13-3/4 x 7-3/4	Cfm	108	144	181	217	253	289	325	361
		Throw	7	8	10	12	15	17	19	21
12 x 8 Ak .493	13-3/4 x 9-3/4	Cfm	148	197	247	296	345	394	444	493
		Throw	7	9	11	13	18	17	19	22
12 x 12 Ak .764	13-3/4 x 13-3/4	Cfm	229	306	382	458	535	611	688	764
		Throw	9	11	14	17	20	22	25	29
14 x 6 Ak .424	15-3/4 x 7-3/4	Cfm	127	169	212	254	297	339	381	424
		Throw	7	8	11	13	16	18	20	23
14 x 8 Ak .576	15-3/4 x 9-3/4	Cfm	173	231	288	346	403	461	519	576
		Throw	8	9	12	14	17	19	21	24
14 x 12 Ak .896	15-3/4 x 13-3/4	Cfm	269	358	448	538	627	717	806	896
		Throw	9	12	14	18	22	24	27	31
16 x 6 Ak .451	17-3/4 x 7-3/4	Cfm	135	181	226	271	316	361	406	451
		Throw	7	10	12	15	17	20	22	25
16 x 8 Ak .618	17-3/4 x 9-3/4	Cfm	185	247	309	371	433	494	556	618
		Throw	8	10	13	15	18	20	22	25
16 x 10 Ak .792	17-3/4 x 11-3/4	Cfm	238	317	396	475	554	633	713	792
		Throw	7	10	12	15	17	20	22	25
16 x 12 Ak .958	17-3/4 x 13-3/4	Cfm	288	383	479	575	671	767	863	958
		Throw	7	10	12	15	17	20	22	25
18 x 6 Ak .514	19-3/4 x 7-3/4	Cfm	154	206	257	308	360	411	463	514
		Throw	8	11	13	16	19	22	24	27
18 x 8 Ak .708	19-3/4 x 9-3/4	Cfm	213	283	354	425	496	567	638	708
		Throw	9	11	13	16	19	22	25	28
18 x 10 Ak .903	19-3/4 x 11-3/4	Cfm	271	361	451	542	632	722	813	903
		Throw	7	10	12	15	17	20	22	25
18 x 12 Ak 1.097	19-3/4 x 13-3/4	Cfm	329	439	549	658	768	878	988	1097
		Throw	7	10	12	15	17	20	22	25
20 x 6 Ak .583	21-3/4 x 7-3/4	Cfm	175	233	292	350	408	467	525	583
		Throw	8	11	14	16	20	23	25	28
20 x 8 Ak .799	21-3/4 x 9-3/4	Cfm	240	319	399	479	559	639	719	799
		Throw	9	12	15	18	21	23	26	29
20 x 10 Ak 1.021	21-3/4 x 11-3/4	Cfm	306	408	510	613	715	817	919	1021
		Throw	7	10	12	15	17	20	22	25
20 x 12 Ak 1.236	21-3/4 x 13-3/4	Cfm	371	494	618	742	865	989	1113	1236
		Throw	7	10	12	15	17	20	22	25
24 x 6 Ak .632	25-3/4 x 7-3/4	Cfm	190	253	316	379	442	506	569	632
		Throw	9	12	15	18	21	23	26	29
24 x 8 Ak .972	25-3/4 x 9-3/4	Cfm	292	389	486	583	681	778	875	972
		Throw	10	13	17	19	23	25	28	31
24 x 12 Ak 1.500	25-3/4 x 13-3/4	Cfm	450	600	750	900	1050	1200	1350	1500
		Throw	7	10	12	15	17	20	22	25

Terminal Velocity of 75 fpm

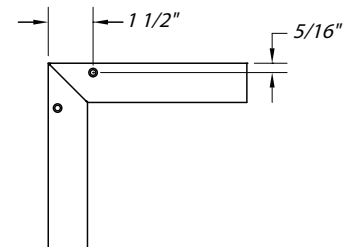
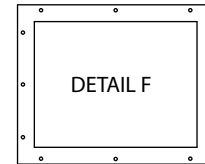
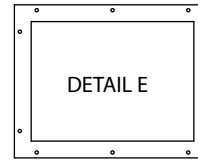
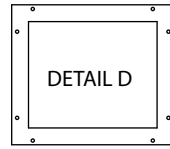
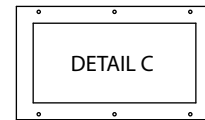
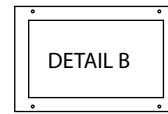
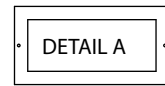
NC ≤30

NC 35

Mounting Hole Guide for Select Products

The following products in this section have embossed (recessed) mounting holes.

Series	Page #
RVML & AVM	122, 127
RHML & AHM	129, 131
RGV & ARGV	133
RGV-0 & ARVG-0	135
RGH & ARGH	137
RGH-0 & ARGH-0	139
HVG & AHVG	141
VHG & AVHG	143
FBG40 & AFBG40	145
FBG60 & AFBG60	147



The following chart and diagrams above apply to these products.

		Width																										
		6	8	10	12	14	15	16	18	20	22	24	26	28	30	32	34	36	38	40	42	44	46	48				
Height	4																									4	Height	
	6																											6
	8				A							B																8
	10			2 Holes								4 Holes									C							10
	12																					6 Holes						12
	14																											14
	15																											15
	16																											16
	18																											18
	20																											20
	22				B								D									E						22
	24			4 Holes									8 Holes									10 Holes						24
	26																											26
	28																											28
	30																											30
	32																											32
	34																											34
	36																											36
38			C									E									F					38		
40			6 Holes									10 Holes									12 Holes					40		
42																										42		
44																										44		
46																										46		
48																										48		
		6	8	10	12	14	15	16	18	20	22	24	26	28	30	32	34	36	38	40	42	44	46	48				
		Width																										

Commercial Sidewall or Ceiling