

Using the **AIRJET** “Snap-Lock” System

Introduction

AirJet’s snap-lock design is deceptively simple. It is so easy to use in fact, that many first time installers attempt to over-complicate it. This document describes both assembly and disassembly of AirJet pipe and provides troubleshooting instructions.

Assembly—for shorter pieces

1. Place one piece on the floor with the male end up. (See Illustration 1.)
2. With the second piece in hand, align the seams.
3. Apply force straight down until you hear the snap (click) that denotes lock engagement.

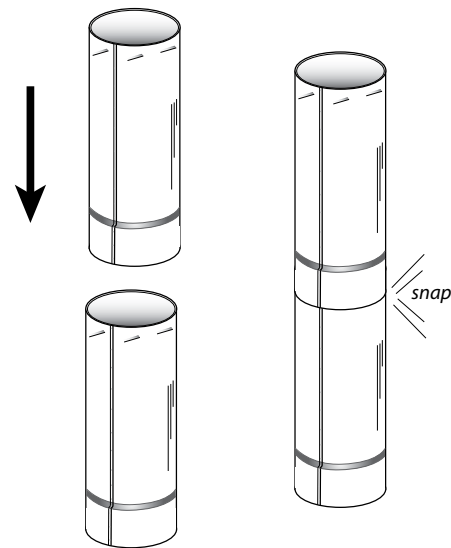


Illustration 1

Assembly—for longer pieces

1. Place one piece along the floor, seam facing up, and the female end against a vertical surface such as wall for leverage. (Protect wall as needed.)
2. With the second piece in hand, align the seams. (See Illustration 2.)
3. Apply force straight in until you hear the snap (click) that denotes lock engagement.

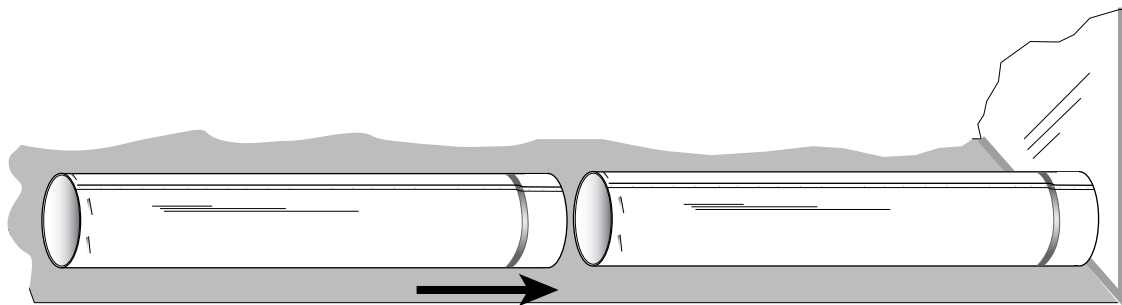


Illustration 2

Disassembly—for shorter pieces

1. Place the adjoined section on the floor.
2. Use your feet to firmly hold the bottom piece.
3. Pull straight up on the top piece to fully engage the snap locks. (Piece will stop, not allowing you to pull up further.)

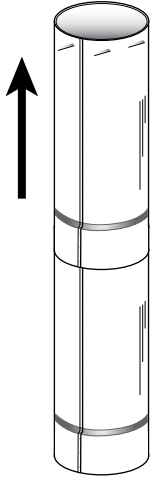


Illustration 3

4. In a continuous motion, turn the top piece counterclockwise while pulling up. (See Illustration 4.)

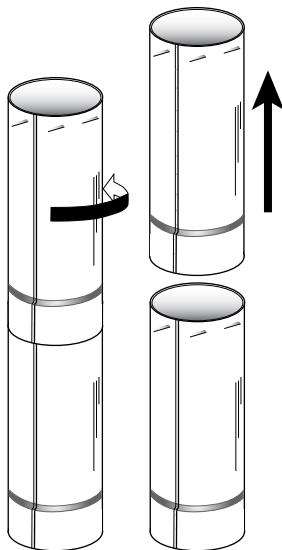


Illustration 4

Disassembly—for longer pieces

1. Obtain the help of an assistant.
2. Have assistant hold one piece firmly.
3. Pull straight out on the other piece to fully engage the snap locks.
4. On the other piece, twist counterclockwise while pulling out.

Troubleshooting

If the product does not assemble as easily as depicted here, it has likely come out of round or become otherwise damaged in shipment.

Inspect both the male and female ends of each section you are trying to connect.

The male end should be smooth and round. An oblong shape denotes that it has been crushed in transit. For minor damage you may be able to apply force in the right locations to correct. Otherwise, report the damage to the shipping company.

The rolled edge, a common feature of all AirJet pipe, should have a consistent diameter. A rare manufacturing defect can account for an uneven rolled edge.

On the female end, look for the same oblong shape problem. Also, check the inner wall, where applicable. It may have become pushed up against the outer wall or have other damage such as a bent seam.

Continental Industries, Inc.
100 West Windsor Avenue
Elkhart, Indiana 46514

Phone: 800.735.5272

Fax: 574.262.2075

Email: info@continentalindustries.com

Web: www.continentalindustries.com