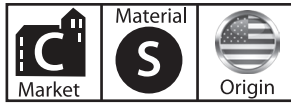


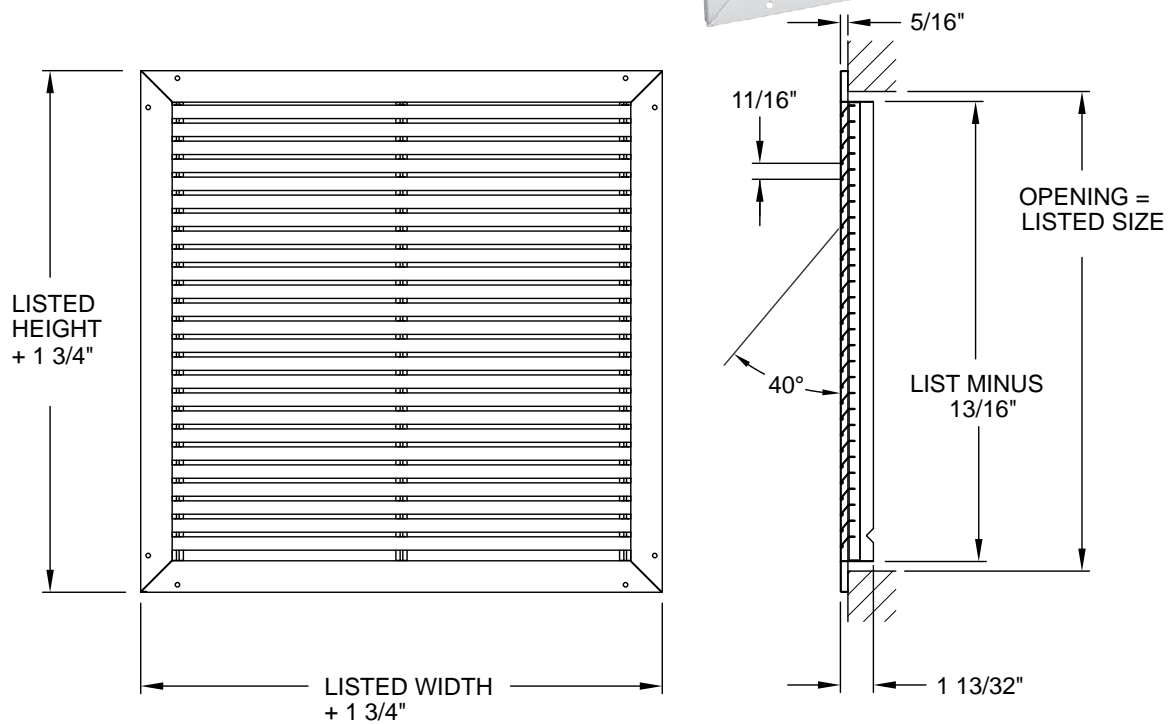
Series FBG40/AFBG40

Fixed Bar Grille

- Designed for Supply or Return Air usage
- Fixed, horizontal, roll-form face bars
- Bars fixed at 40° deflection
- Commercial grade steel construction (FBG40)
- Commercial grade **aluminum** construction (AFBG40)
- White finish
- Made in the U.S.A.



Dimensional Drawings



Performance Data, Series FBG40/AFBG40

Unit Size (in.)	Overall Size (in.)	Face Velocity	400	600	800	1000
6 x 6 Ak .06	7 ³ / ₄ x 7 ³ / ₄	Cfm	26	38	51	64
		Pt	0.006	0.026	0.028	0.069
8 x 8 Ak .13	9 ³ / ₄ x 9 ³ / ₄	Cfm	54	81	108	135
		Pt	0.007	0.027	0.029	0.070
10 x 6 Ak .12	11 ³ / ₄ x 7 ³ / ₄	Cfm	50	75	99	124
		Pt	0.007	0.026	0.028	0.069
10 x 10 Ak .23	11 ³ / ₄ x 11 ³ / ₄	Cfm	92	139	185	231
		Pt	0.009	0.027	0.029	0.070
12 x 6 Ak .15	13 ³ / ₄ x 7 ³ / ₄	Cfm	62	93	124	154
		Pt	0.012	0.027	0.047	0.076

Performance Data, Series FBG40/AFBG40 (continued)

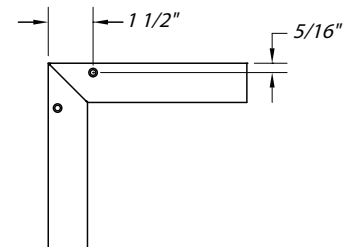
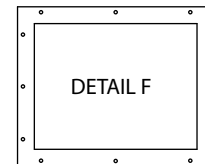
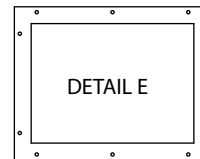
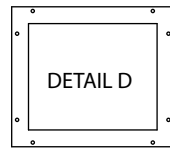
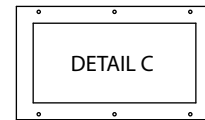
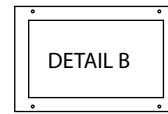
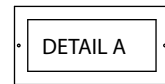
Unit Size (in.)	Overall Size (in.)	Face Velocity	400	600	800	1000
12 x 8 Ak .22	13 ³ / ₄ x 9 ³ / ₄	Cfm	88	132	177	221
		Pt	0.015	0.026	0.028	0.069
12 x 12 Ak .35	13 ³ / ₄ x 13 ³ / ₄	Cfm	141	212	282	353
		Pt	0.010	0.039	0.041	0.110
14 x 6 Ak .18	15 ³ / ₄ x 7 ³ / ₄	Cfm	74	111	148	185
		Pt	0.012	0.042	0.046	0.115
14 x 8 Ak .26	15 ³ / ₄ x 9 ³ / ₄	Cfm	105	158	211	264
		Pt	0.011	0.040	0.043	0.110
14 x 14 Ak .50	15 ³ / ₄ x 15 ³ / ₄	Cfm	200	301	401	501
		Pt	0.011	0.040	0.043	0.084
16 x 10 Ak .40	17 ³ / ₄ x 11 ³ / ₄	Cfm	160	239	319	399
		Pt	0.016	0.027	0.029	0.070
16 x 16 Ak .67	17 ³ / ₄ x 17 ³ / ₄	Cfm	270	405	540	675
		Pt	0.012	0.042	0.046	0.087
18 x 18 Ak .85	19 ³ / ₄ x 19 ³ / ₄	Cfm	340	510	679	849
		Pt	0.008	0.035	0.034	0.053
20 x 10 Ak .50	21 ³ / ₄ x 11 ³ / ₄	Cfm	199	299	398	498
		Pt	0.016	0.027	0.029	0.070
20 x 12 Ak .61	21 ³ / ₄ x 13 ³ / ₄	Cfm	245	367	490	612
		Pt	0.017	0.028	0.030	0.071
20 x 14 Ak .73	21 ³ / ₄ x 15 ³ / ₄	Cfm	291	436	582	727
		Pt	0.013	0.041	0.042	0.083
20 x 20 Ak 1.07	21 ³ / ₄ x 21 ³ / ₄	Cfm	429	643	857	1072
		Pt	0.015	0.034	0.031	0.051
24 x 10 Ak .61	25 ³ / ₄ x 11 ³ / ₄	Cfm	244	366	488	610
		Pt	0.017	0.028	0.030	0.071
24 x 12 Ak .75	25 ³ / ₄ x 13 ³ / ₄	Cfm	300	450	600	750
		Pt	0.010	0.039	0.042	0.083
24 x 14 Ak .89	25 ³ / ₄ x 15 ³ / ₄	Cfm	356	535	713	891
		Pt	0.019	0.030	0.032	0.073
24 x 24 Ak 1.59	25 ³ / ₄ x 25 ³ / ₄	Cfm	638	957	1275	1594
		Pt	0.008	0.040	0.043	0.047
30 x 10 Ak .78	31 ³ / ₄ x 11 ³ / ₄	Cfm	311	466	622	777
		Pt	0.019	0.030	0.032	0.073
30 x 12 Ak .96	31 ³ / ₄ x 12 ³ / ₄	Cfm	383	574	765	957
		Pt	0.027	0.035	0.033	0.096
30 x 14 Ak 1.14	31 ³ / ₄ x 15 ³ / ₄	Cfm	455	682	909	1136
		Pt	0.028	0.035	0.034	0.075
30 x 20 Ak 1.67	31 ³ / ₄ x 21 ³ / ₄	Cfm	670	1005	1340	1675
		Pt	0.030	0.036	0.038	0.079

Commercial
Sidewall or Ceiling

Mounting Hole Guide for Select Products

The following products in this section have embossed (recessed) mounting holes.

Series	Page #
RVML & AVM	122, 127
RHML & AHM	129, 131
RGV & ARGV	133
RGV-0 & ARVG-0	135
RGH & ARGH	137
RGH-0 & ARGH-0	139
HVG & AHVG	141
VHG & AVHG	143
FBG40 & AFBG40	145
FBG60 & AFBG60	147



The following chart and diagrams above apply to these products.

		Width																									
		6	8	10	12	14	15	16	18	20	22	24	26	28	30	32	34	36	38	40	42	44	46	48			
Height	4																									4	
	6																										6
	8				A							B															8
	10			2 Holes								4 Holes									C						10
	12																					6 Holes					12
	14																										14
	15																										15
	16																										16
	18																										18
	20																										20
	22				B								D									E					22
	24			4 Holes									8 Holes									10 Holes					24
	26																										26
	28																										28
	30																										30
	32																										32
	34																										34
	36																										36
38				C								E									F					38	
40			6 Holes									10 Holes									12 Holes					40	
42																										42	
44																										44	
46																										46	
48																										48	
		6	8	10	12	14	15	16	18	20	22	24	26	28	30	32	34	36	38	40	42	44	46	48			
		Width																									

Commercial Sidewall or Ceiling