

Using the *AIRJET* “Snap-Lock” System

Introduction

AirJet’s snap-lock design is deceptively easy to both assemble and disassemble. Here’s how:

Assembly—for shorter pieces

1. Place one piece on the floor with the male end up. (See Illustration 1.)
2. With the second piece in hand, align the seams.
3. Apply force straight down until you hear the snap (click) that denotes lock engagement.

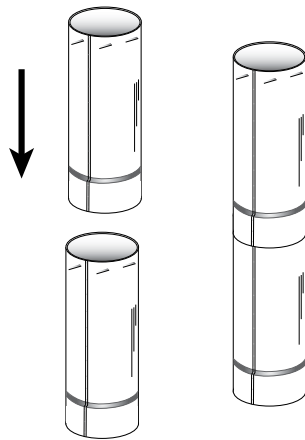


Illustration 1

Assembly—for longer pieces

1. Place one piece along the floor, seam facing up, and the female end against a vertical surface such as wall for leverage. (Protect wall as needed.)
2. With the second piece in hand, align the seams. (See Illustration 2.)
3. Apply force straight in until you hear the snap (click) that denotes lock engagement.

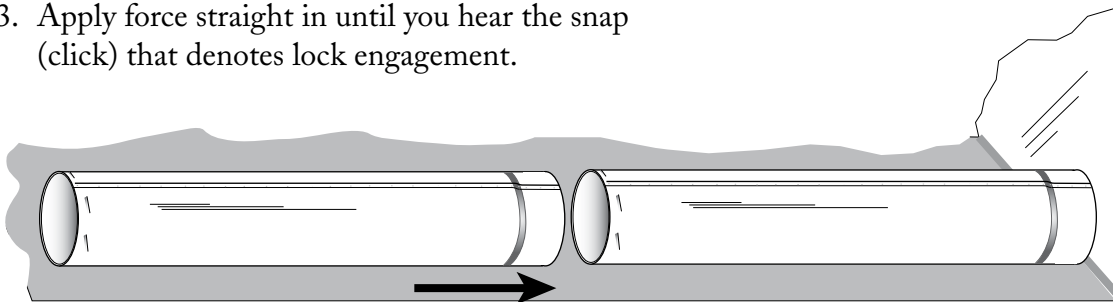


Illustration 2

Disassembly—for shorter pieces

1. Place the adjoined section on the floor.
2. Use your feet to firmly hold the bottom piece.
3. In one continuous motion, turn the top piece counterclockwise while pulling up on it. (See Illustration 3.)

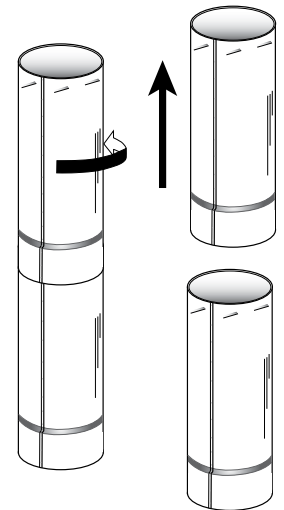


Illustration 3

Disassembly—for longer pieces

1. Obtain the help of an assistant.
2. Have assistant hold one piece firmly.
3. On the other piece, twist counterclockwise while pulling out.