

## Pellet/Corn Stove Venting System

### Installation Guide

Model LC  
Type L Vent

#### Important Installation and Operation Notes

- ❑ Inspect each component for damage before installing; rectify damage product claims through your retailer.
- ❑ Consult local building codes or fire officials about restrictions and necessary inspections in your area.
- ❑ The AirJet Pellet/Corn Stove Venting System is designed and approved for the venting of listed pellet stoves and gas and oil furnaces that do not exceed 570° F at the outlet.
- ❑ This system is intended to form a continuous passage from the appliance to above the roof line, including the chimney cap.
- ❑ To comply with UL Listings and the AirJet warranty, use only the chimney parts defined by these instructions.
- ❑ Use the AirJet chimney cap on all installations to prevent back drafts and to keep out rain and other debris.
- ❑ This system provides for a continuous conduit of flue gases through a double-walled construction with stainless steel lining and galvanized exterior. You can further enhance the life of system by coating all exterior metal with high-temperature, rust-proof paint.
- ❑ Maintain a 3-inch minimum clearance to combustibles when passing through walls, ceilings, or roofs. **Always** use a Firestop when penetrating a wall or ceiling.
- ❑ Combustible material includes all material surfaced in wood, paper, plant fibers, plastics and related material. Such material is considered combustible even if it is classified as flame proof or fire retardant, or has been plastered.
- ❑ For vertical installations, the maximum height is 60 feet; use a support at 30 feet.
- ❑ An increaser may be used at any point in the system to meet the requirements of the appliance manufacturer.
- ❑ In considering the path of the venting system, carefully evaluate the support structures of your home or building to avoid or minimize passing through these structures.
- ❑ If fly ash leakage occurs, seal the associated casing joints with a silicone-based sealer rated at 400° F or higher.

#### Using the AirJet “Snap-Lock” System

Our unique system makes assembly and disassembly a snap!

##### Assembly

1. With male ends up, align the seams.
2. Push the pieces straight together until they “click.”

**Note:** No twisting is needed. It may be helpful to place one piece on the floor and snap the other on top.

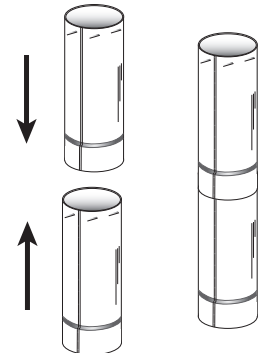


Illustration 1

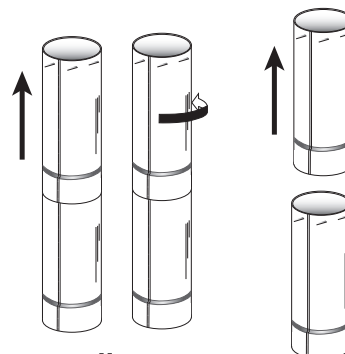


Illustration 2

##### Disassembly

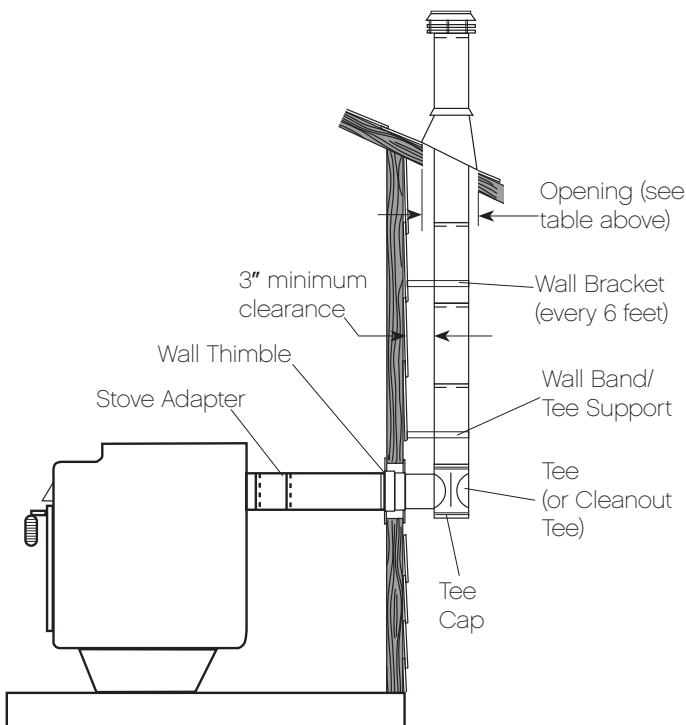
1. Pull up on top piece to fully engage the locks.
2. Twist the top piece counter-clockwise and pull up.

## Rear Stove Exhaust—Indirect Exterior Venting

1. Complete steps 1–6 of the adjacent (Direct Vent) procedure.
2. Install the horizontal chimney sections, allowing the last section to extend far enough to reach the Tee in the following step.
3. Install the Tee (or cleanout tee) allowing a minimum of 3 inches between the vertical pipe and the exterior of the building.
4. Attach a Wall Band/Tee Support just above the Tee.
5. Install the vertical chimney sections, securing it with additional Wall Brackets every 6 feet.
6. If the chimney must pass through an overhang, (if not, skip to step X) cut a hole in the overhang according to the pipe diameter you are using:

Pipe Diameter	Required Opening
3"	9.5" X 9.5"
4"	10.5" X 10.5"

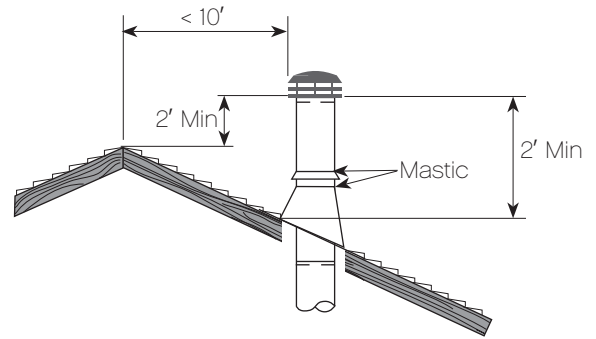
6. Slide the flashing over the pipe and secure to roof. Apply mastic tape where the chimney passes through the flashing. Apply a thick ring of mastic around the chimney. Slide the storm collar down into the mastic ring and secure (see Illustration 4).
7. Install any additional chimney sections terminating at the Chimney Cap. See Illustrations 4 and 5.



**Illustration 3**

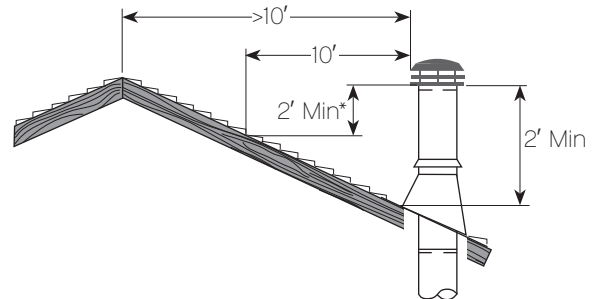
## Terminating Vertical Venting

For terminating less than 10 feet from the ridge, a wall, or parapit:



**Illustration 4**

For terminating more than 10 feet from the ridge, a wall, or parapit:



**Illustration 5**

\* **Note:** Maintain a minimum of 2 feet above any roof surface within 10 feet horizontally.

## Rear Stove Exhaust—Interior Venting

### Warning

When installing the chimney from the rear outlet, maintain at least 3 inches between the chimney and any combustible surface.

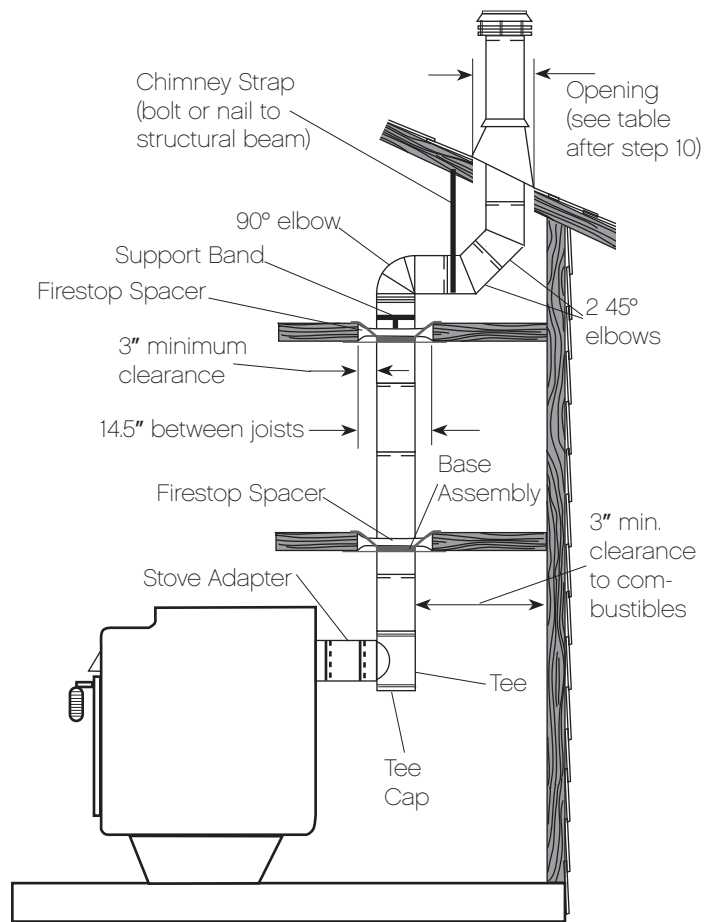
1. Attach the stove adaptor to the stove flue outlet and secure with sheet metal screws.
2. To prevent fly ash leakage occurs, seal the joints with a silicone-based sealer rated at 400° F or higher.
3. To facilitate cleaning and inspection, install a Tee to make the transition to vertical.
4. On the ceiling, mark the vertical centerline of the chimney. (A plumb bob is typically used here.)
5. In the ceiling, cut a 14.5-inch square hole.

**Note:** It is highly recommended that you frame the hole any time you pass through the ceiling. Use the same size joists as those already present.

6. On the ceiling side, install a Firestop Spacer. (If the attic is directly above, install the spacer from the attic side.)
7. On the floor side, install the Base Assembly, snapping the tabs into the groove of the pipe section.
8. Continue installation into the attic and through the firestop. Attach a Support Band over the pipe with the flange of the Band resting on the Firestop plate. Tighten the Band around the chimney using the bolts and nuts provided.
9. If you use elbows to avoid obstructions, use a chimney strap to support the offset portion of pipe.
10. Where the chimney must pass through the roof, cut a hole according to the pipe diameter you are using:

Pipe Diameter	Required Opening
3"	9.5" X 9.5"
4"	10.5" X 10.5"

11. Slide the flashing over the pipe and secure to roof. Apply mastic tape where the chimney passes through the flashing. Apply a thick ring of mastic around the chimney. Slide the storm collar down into the mastic ring and secure (see Illustration 4).
12. Install any additional chimney sections terminating at the Chimney Cap. See Illustrations 4 and 5.



**Illustration 6**

## Top Stove Exhaust Venting

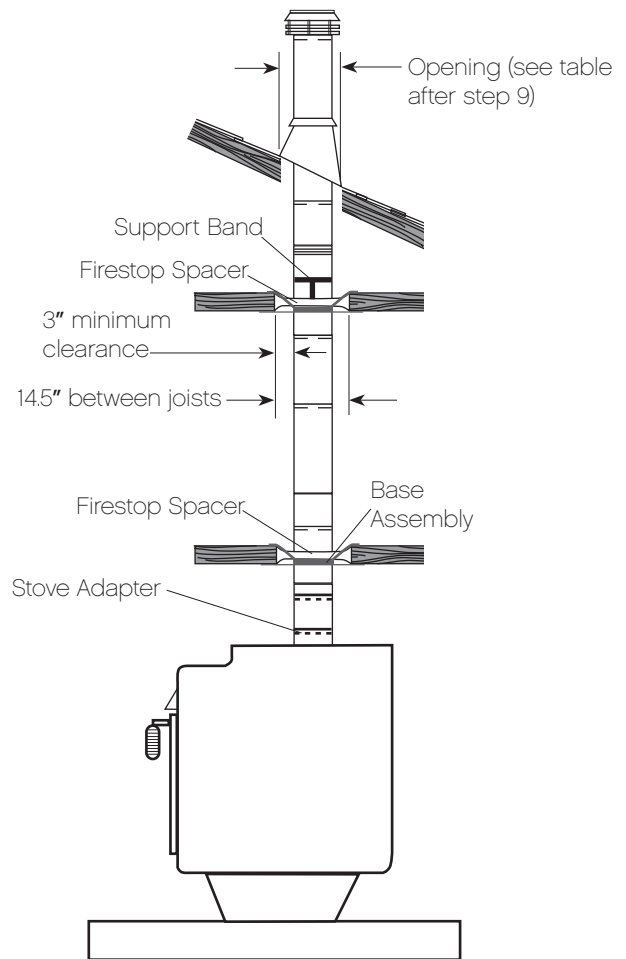
1. Attach the stove adaptor to the stove flue outlet and secure with sheet metal screws.
2. To prevent fly ash leakage occurs, seal the joints with a silicone-based sealer rated at 400° F or higher.
3. On the ceiling, mark the vertical centerline of the chimney. (A plumb bob is typically used here.)
4. In the ceiling, cut a 14.5-inch square hole.

**Note:** It is highly recommended that you frame the hole any time you pass through the ceiling. Use the same size joists as those already present.

5. On the ceiling side, install a Firestop Spacer. (If the attic is directly above, install the spacer from the attic side.)
6. On the floor side, install the Base Assembly, snapping the tabs into the groove of the pipe section.
7. Continue installation into the attic and through the firestop. Attach a Support Band over the pipe with the flange of the Band resting on the Firestop plate. Tighten the Band around the chimney using the bolts and nuts provided.
8. If you use elbows to avoid obstructions, use a chimney strap to support the offset portion of pipe.
9. Where the chimney must pass through the roof, cut a hole according to the pipe diameter you are using:

Pipe Diameter	Required Opening
3"	9.5" X 9.5"
4"	10.5" X 10.5"

10. Slide the flashing over the pipe and secure to roof. Apply mastic tape where the chimney passes through the flashing. Apply a thick ring of mastic around the chimney. Slide the storm collar down into the mastic ring and secure (see Illustration 4).
11. Install any additional chimney sections terminating at the Chimney Cap. See Illustrations 4 and 5.



**Illustration 7**

## Maintenance

---

- ❑ Before the start of the heating season, inspect and clean the chimney system.
- ❑ During the heating season, inspect and clean the chimney system at least once each month.
- ❑ Caps may be removed for cleaning and inspecting the system. To do so, follow the same disassembly instructions as used for the remainder of the AirJet Snap-Lock system (see Illustration 2, page 1).

## Limited Warranty

---

AirJet Venting Systems (AirJet), a division of Continental Industries, Incorporated, warrants its Venting Systems (product) to be free of manufacturing defects for a period of 18 (eighteen) months from the date of shipment from the factory.

Any of these products which are defective in workmanship or materials will be replaced within this period F.O.B.—AirJet manufacturing plant or authorized AirJet factory warehouse which normally stocks the product. AirJet reserves the right to determine whether the product is in accordance with its specifications or tolerances.

It is to be understood that AirJet's responsibility for its products is expressly limited to the product. AirJet is not responsible for any phase of the installation of its products, or for improper operation due to faulty installation, or for the cost of removal and replacement.

AirJet has and assumes no obligation whatsoever in regard to its products for failure by any building owner, architect or builder to comply with applicable Federal, State, and local ordinances and regulations.

There are no obligations or liabilities on the part of AirJet for consequential damages arising out of or in connection with the use or performance of the product, including all labor and other material used in connection with the repair or replacement of any defective unit warranted hereunder, or other indirect damages with respect to loss of revenues or profits.

# Model LC System Components

**Round Pipe**

ITEM	A	D
LC5	60"	3" and 4"
LC3	36"	3" and 4"
LC2	24"	3" and 4"
LC1	12"	3" and 4"
LCS5	60"	3" and 4"
LCS3	36"	3" and 4"

L - Galvanize Jacket  
LS - Stainless Jacket

**12" Adjustable Length Pipe**

ITEM	A	D
3LCARI	12"	3"
4LCARI	12"	4"

**60° Adjustable Elbow**

ITEM	A	B	D
3LC60	17 <sup>7</sup> / <sub>8</sub> "	5 <sup>1</sup> / <sub>4</sub> "	3 <sup>3</sup> / <sub>4</sub> "
4LC60	2 <sup>1</sup> / <sub>8</sub> "	5 <sup>1</sup> / <sub>2</sub> "	4 <sup>3</sup> / <sub>4</sub> "

**90° Adjustable Elbow**

ITEM	A	B	D
3LC90	5 <sup>5</sup> / <sub>16</sub> "	5 <sup>7</sup> / <sub>16</sub> "	3 <sup>3</sup> / <sub>4</sub> "
4LC90	6 <sup>25</sup> / <sub>32</sub> "	6 <sup>21</sup> / <sub>32</sub> "	4 <sup>3</sup> / <sub>4</sub> "

**90° Adjustable Elbow as Offset**

ITEM	A	B	D
3LC90	8 <sup>11</sup> / <sub>16</sub> "	2 <sup>1</sup> / <sub>16</sub> "	3 <sup>3</sup> / <sub>4</sub> "
4LC90	9 <sup>1</sup> / <sub>8</sub> "	2 <sup>15</sup> / <sub>16</sub> "	4 <sup>3</sup> / <sub>4</sub> "

**Round Tee**

ITEM	A	B	C	D
3LCRT	8"	3 <sup>1</sup> / <sub>16</sub> "	3 <sup>15</sup> / <sub>16</sub> "	3 <sup>3</sup> / <sub>4</sub> "
4LCRT	9"	3 <sup>3</sup> / <sub>4</sub> "	4 <sup>11</sup> / <sub>16</sub> "	4 <sup>3</sup> / <sub>4</sub> "

**Round Tee Cap**

ITEM	D
3LCTC	3 <sup>3</sup> / <sub>4</sub> "
4LCTC	4 <sup>3</sup> / <sub>4</sub> "

**Jet Cap (Stainless)**

ITEM	A	B	C	D
3LCJC	4 <sup>3</sup> / <sub>4</sub> "	6 <sup>1</sup> / <sub>2</sub> "	4 <sup>1</sup> / <sub>4</sub> "	3 <sup>11</sup> / <sub>16</sub> "
4LCJC	4 <sup>7</sup> / <sub>8</sub> "	6 <sup>1</sup> / <sub>2</sub> "	4 <sup>3</sup> / <sub>8</sub> "	4 <sup>11</sup> / <sub>16</sub> "

**Storm Collar (Aluminum)**

ITEM	D
3LCSC	3 <sup>3</sup> / <sub>4</sub> "
4LCSC	4 <sup>3</sup> / <sub>4</sub> "

**Adjustable Roof Flashing (Aluminum)**

ITEM	A	B
3LCBF	5 <sup>1</sup> / <sub>2</sub> "	8 <sup>3</sup> / <sub>16</sub> "
4LCBF	4 <sup>5</sup> / <sub>8</sub> "	8 <sup>3</sup> / <sub>16</sub> "

**Steep Pitch Flashing (Aluminum)**

ITEM	A
3LCBFX	3"
4LCBFX	4"

**Tall Cone Roof Flashing (Aluminum)**

ITEM	A	B	C	D
3LCBFT	3 <sup>7</sup> / <sub>8</sub> "	8 <sup>3</sup> / <sub>16</sub> "	15 <sup>5</sup> / <sub>32</sub> "	3 <sup>3</sup> / <sub>4</sub> "
4LCBFT	4 <sup>7</sup> / <sub>8</sub> "	8 <sup>3</sup> / <sub>16</sub> "	15 <sup>5</sup> / <sub>32</sub> "	4 <sup>3</sup> / <sub>4</sub> "

**Base Assembly**

ITEM	A	B	D
3LCBA	17"	5 <sup>5</sup> / <sub>8</sub> "	3 <sup>3</sup> / <sub>4</sub> "
4LCBA	17"	6 <sup>5</sup> / <sub>8</sub> "	4 <sup>3</sup> / <sub>4</sub> "

**Draft Hood Connector**

ITEM	D
3LCDH	3 <sup>5</sup> / <sub>8</sub> "
4LCDH	4 <sup>5</sup> / <sub>8</sub> "

**Wall Thimble**

ITEM	D	A	B
3CVT	3 <sup>3</sup> / <sub>4</sub> "	6 <sup>3</sup> / <sub>4</sub> "	5 <sup>1</sup> / <sub>8</sub> "
4CVT	4 <sup>3</sup> / <sub>4</sub> "	9 <sup>3</sup> / <sub>8</sub> "	8 <sup>1</sup> / <sub>2</sub> "

**Fire Stop**

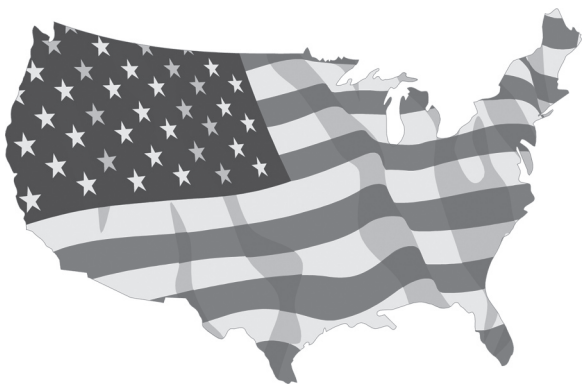
ITEM	A	D
3LCF	17"	3 <sup>3</sup> / <sub>4</sub> "
4LCF	17"	4 <sup>3</sup> / <sub>4</sub> "

**Interior Support Band**

ITEM	D
3LC SB	3 <sup>1</sup> / <sub>2</sub> "
4LC SB	4 <sup>1</sup> / <sub>2</sub> "

**Double Wall Increaser**

ITEM	SIZES
3x4LCD	3x4



AirJet proudly manufactures in the U.S.A.

**AIRJET**

AirJet Venting Systems  
a division of Continental Industries, Inc.  
3020 Mine Road  
Fredericksburg, Virginia 22408

Phone: 866.324.7538  
Fax: 574.262.2075  
Email: [4airjet@theventpeople.com](mailto:4airjet@theventpeople.com)  
Web: [www.theventpeople.com](http://www.theventpeople.com)